



TRUCK MOUNTED CRANE

HA70



www.hyvacrane.com
www.hyva.com

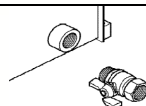
Max dynamic moment	8600
---------------------------	------

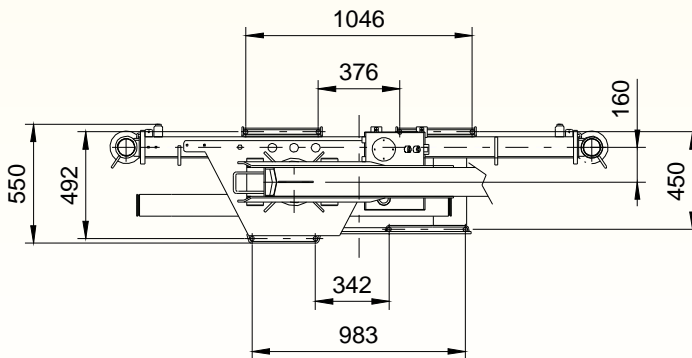
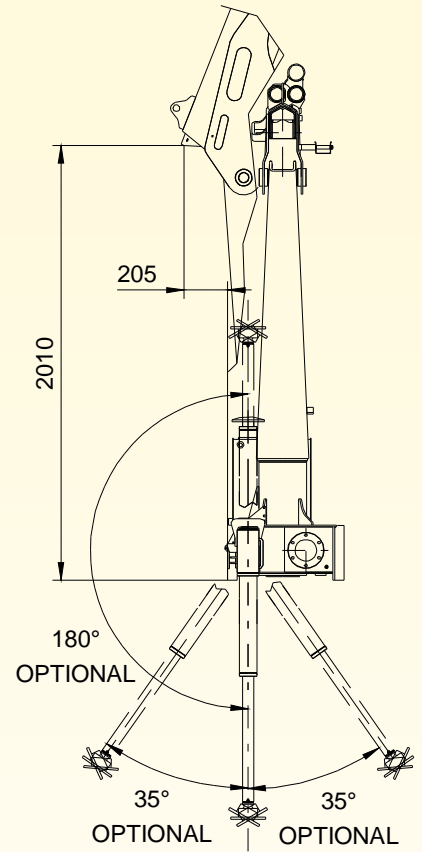
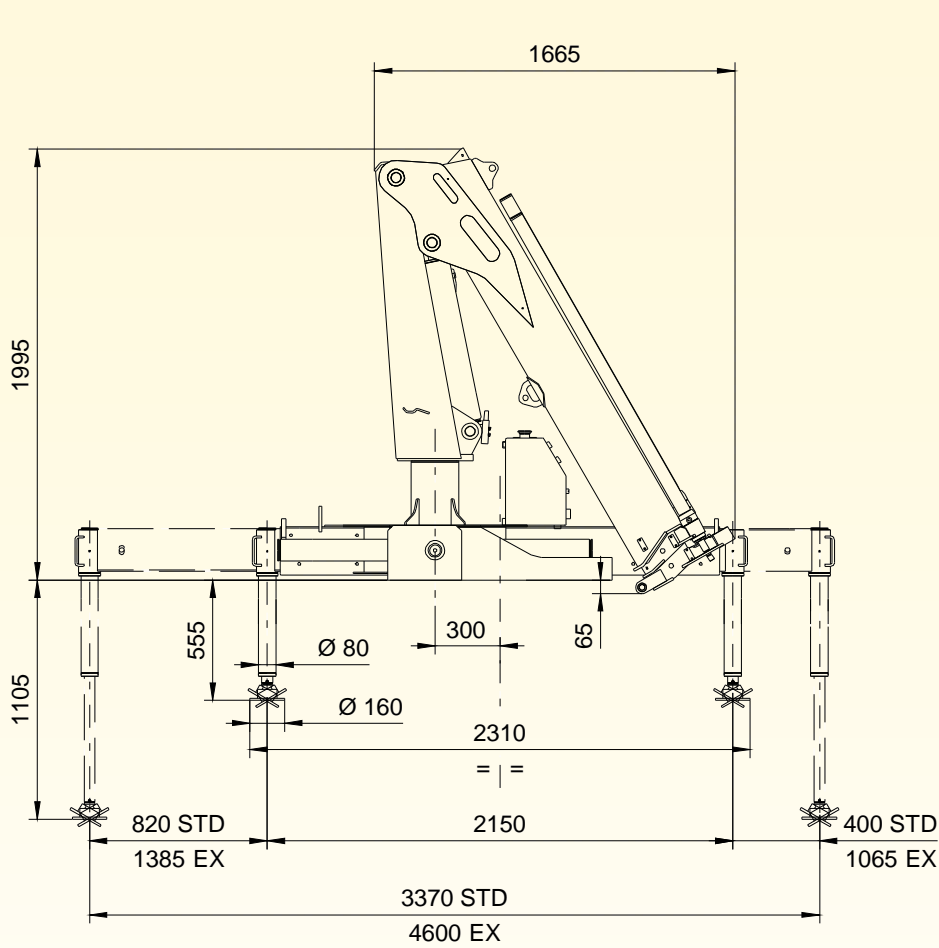
	Version	
Max capacity (kg)	E2	3380
	E3	3225
	E4	3035

	Version	STD	EX	EX HYD
Crane weight (kg)	E2	880	925	955
	E3	940	985	1015
	E4	1000	1045	1075

Max force on the standard stabilizer leg	5970 daN
Max force on the extra stabilizer leg	3980 daN
Max standard stabilizer pressure on the ground	33.8 daN/cm ²
Max extra stabilizer pressure on the ground	22.6 daN/cm ²
Max working pressure	260 bar
Max oil flow	18 l/min
Oil tank capacity	35 l
Slewing moment	1390 daNm
Slewing angle	400°
Absorbed power	9.4 kW 12.6 HP
Design standard	DIN 15018 EN 12999

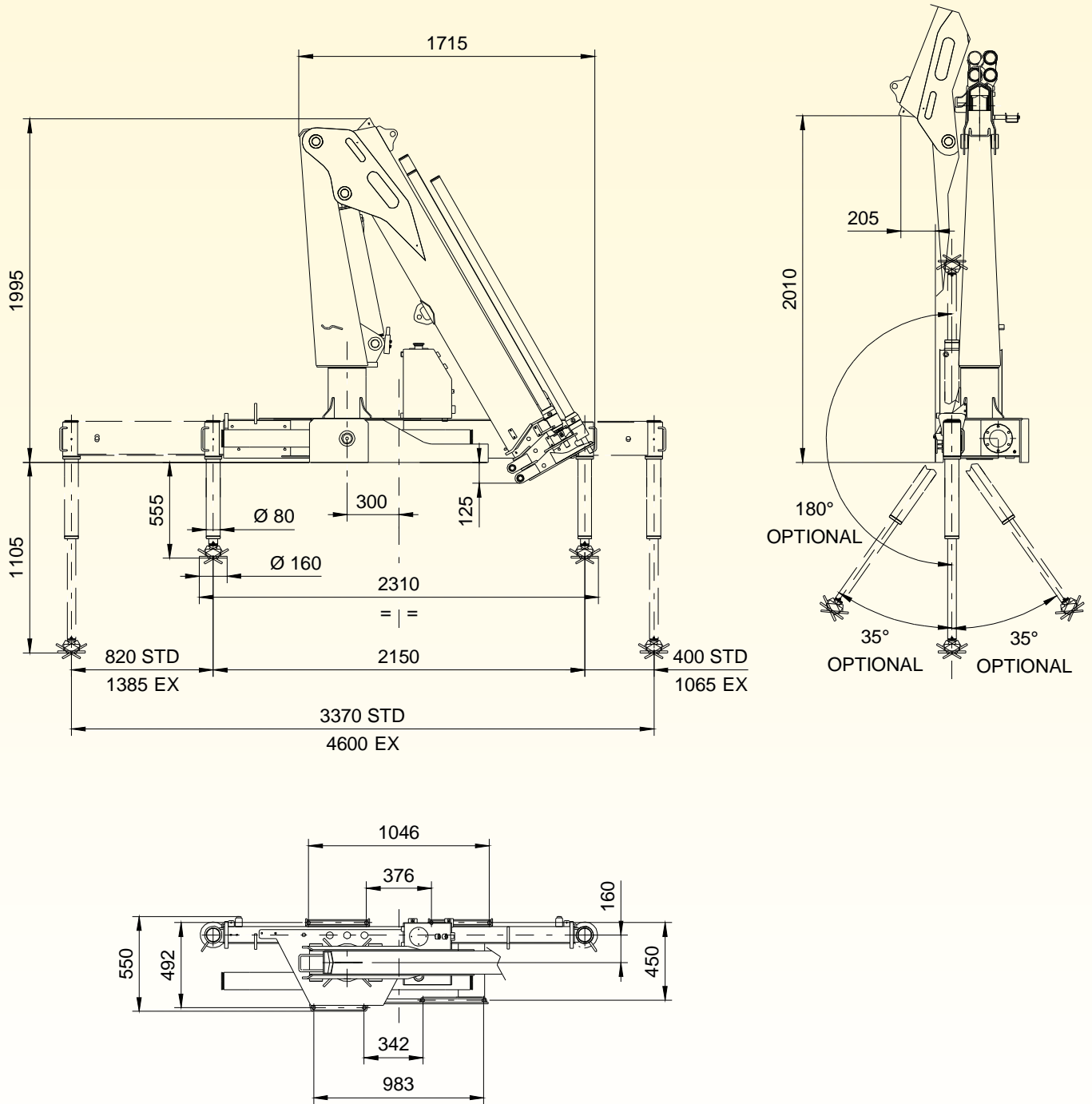
Fittings for connection with pump	NO RDC	RDC
Control valve pressure line	M3/4" - 16 JIC	M3/4" - 16 JIC
Tank suction line	F1" BSP	F1" BSP





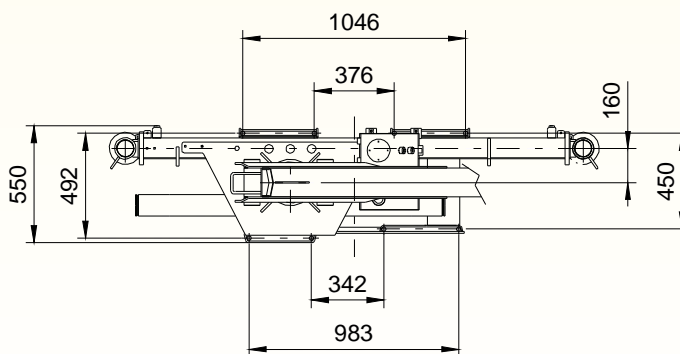
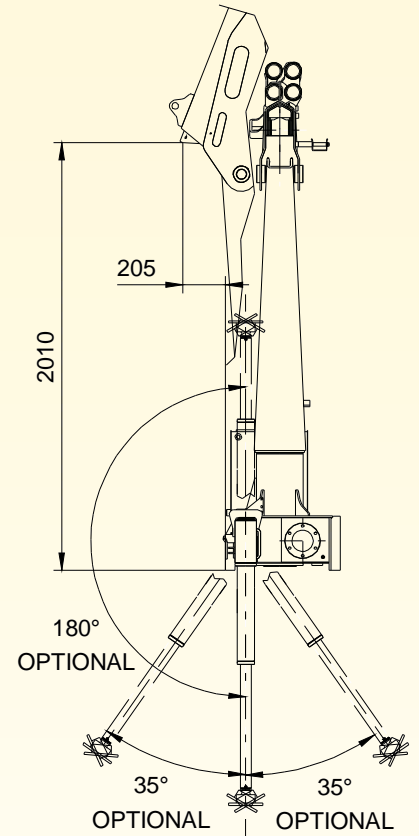
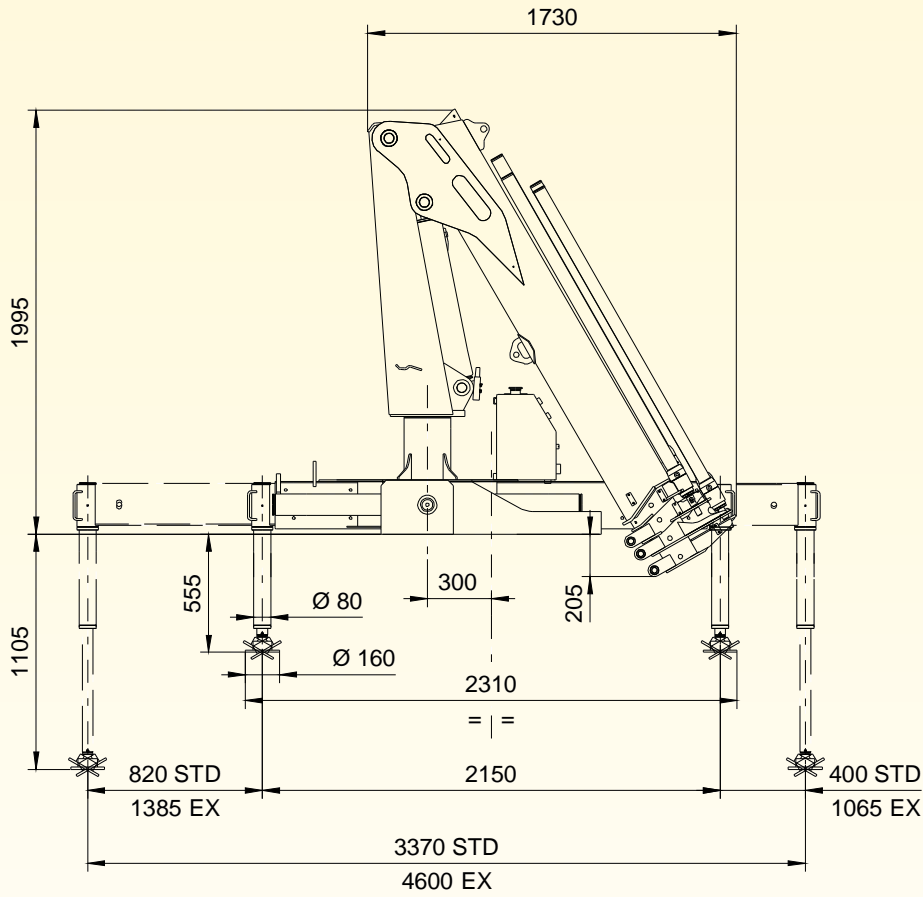
HA70 TECHNICAL SHEET

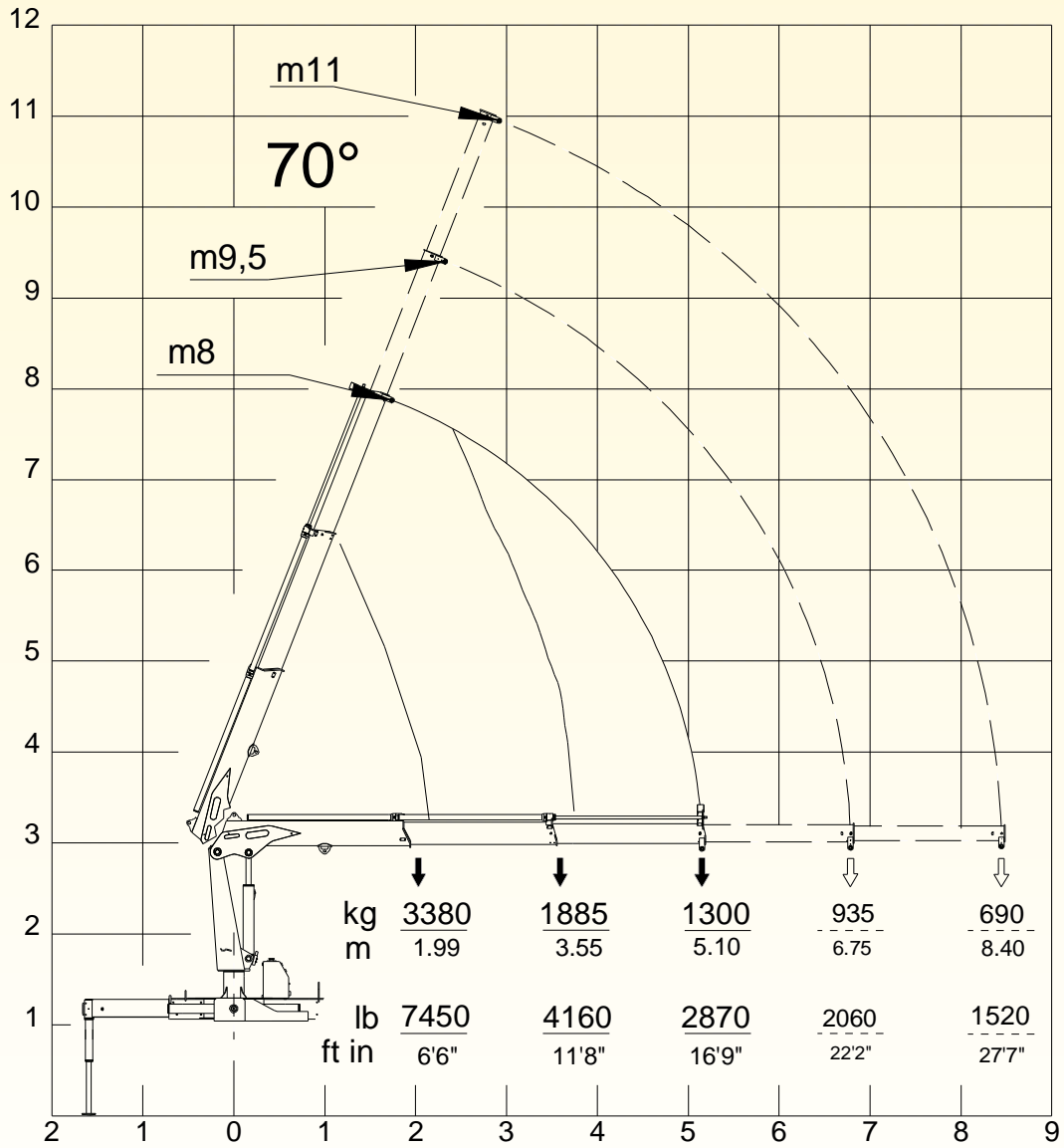
OVERALL DIMENSIONS E3

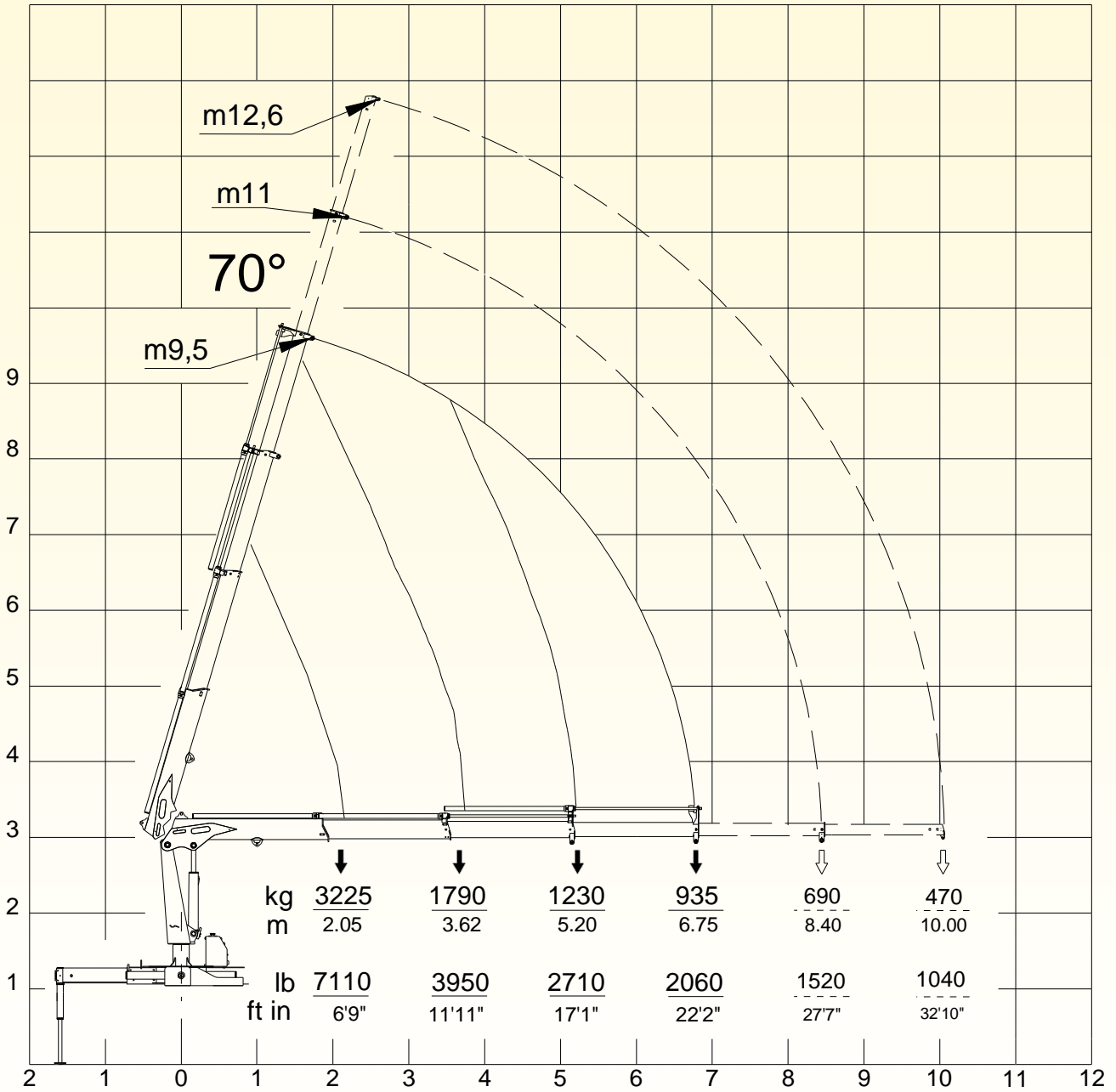


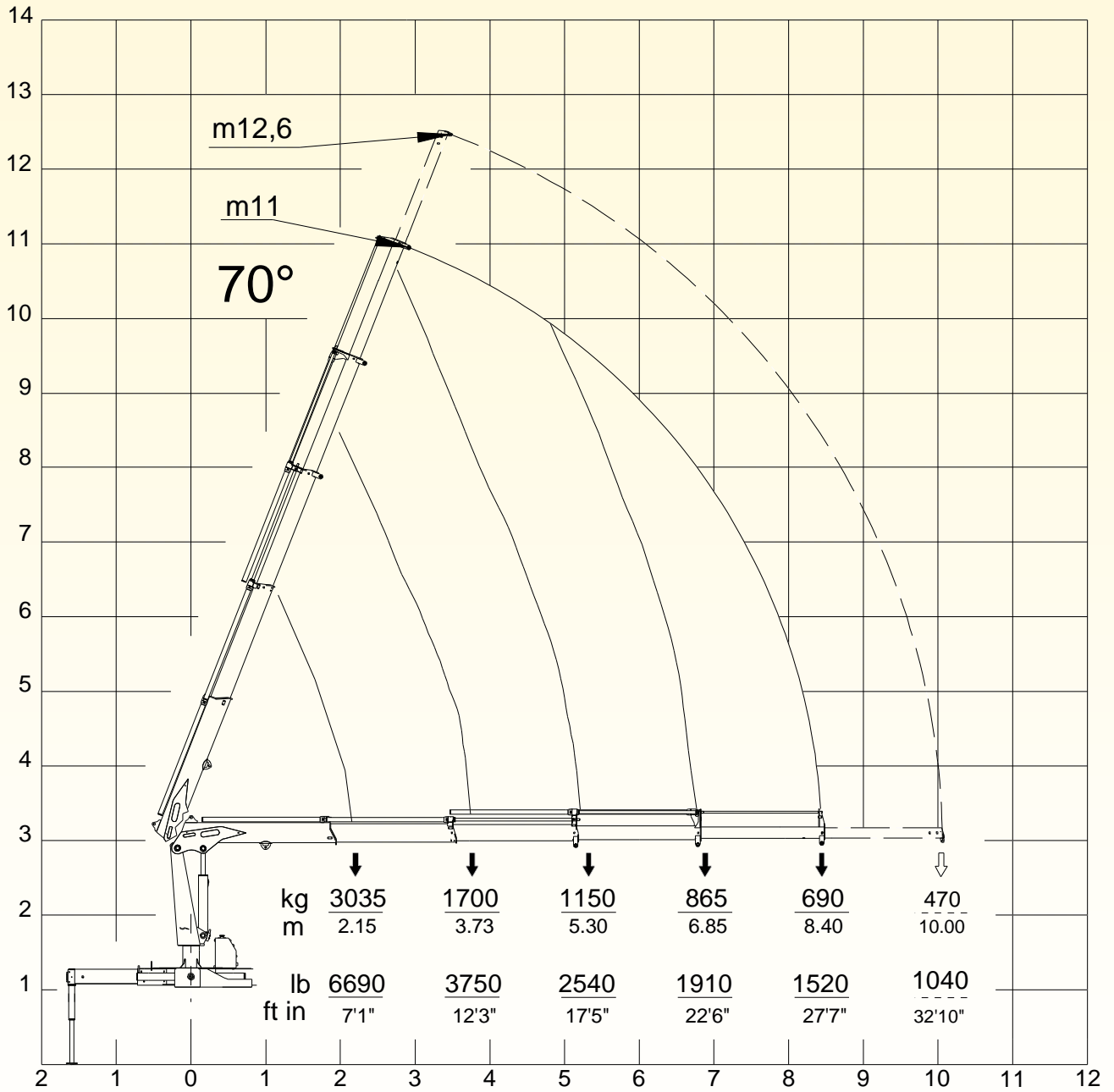
HA70 TECHNICAL SHEET

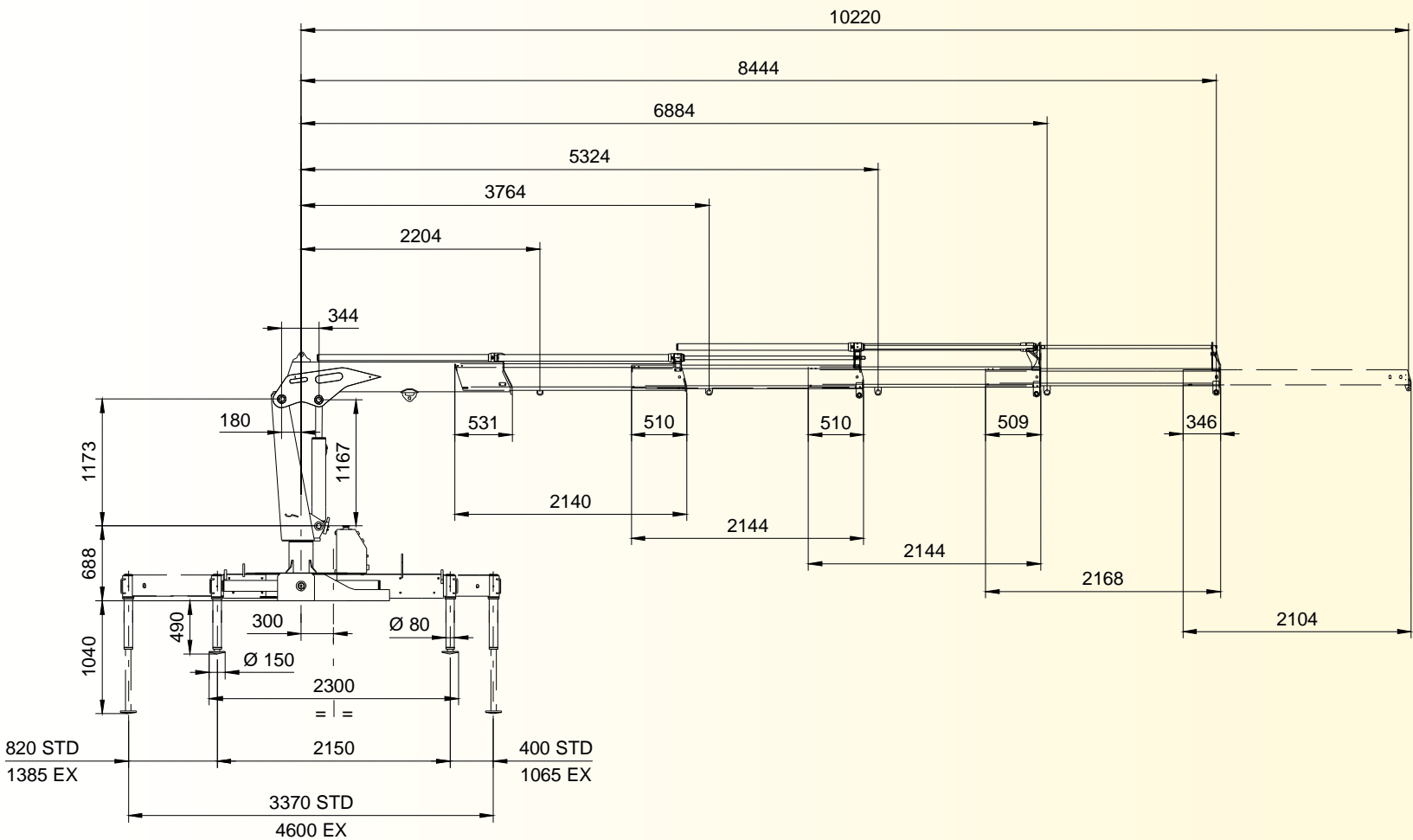
OVERALL DIMENSIONS E4











HA70 TECHNICAL SHEET

CYLINDERS AND PINS DIMENSIONS

LIFTING CYLINDER	E2-E3-E4
<i>Cylinder bore</i>	110
<i>Cyl. ext. diameter</i>	125
<i>Rod diameter</i>	60 - 0
<i>Centers (open)</i>	1505
<i>Centers (closed)</i>	890
<i>Stroke</i>	615
<i>∅ Artic. pin ∅</i>	45
<i>Pin material</i>	C45

1ST EXTENSION CYL.	E2-E3-E4
<i>Cylinder bore</i>	50
<i>Cyl. ext. diameter</i>	60
<i>Rod diameter</i>	35 - 25
<i>Centers (open)</i>	1710
<i>Centers (closed)</i>	150
<i>Stroke</i>	1560

2ND EXTENSION CYL.	E2
<i>Cylinder bore</i>	50
<i>Cyl. ext. diameter</i>	60
<i>Rod diameter</i>	30 - 0
<i>Centers (open)</i>	1710
<i>Centers (closed)</i>	150
<i>Stroke</i>	1560

2ND EXTENSION CYL.	E3-E4
<i>Cylinder bore</i>	50
<i>Cyl. ext. diameter</i>	60
<i>Rod diameter</i>	35 - 25
<i>Centers (open)</i>	1710
<i>Centers (closed)</i>	150
<i>Stroke</i>	1560

3TH EXTENSION CYL.	E3
<i>Cylinder bore</i>	50
<i>Cyl. ext. diameter</i>	60
<i>Rod diameter</i>	30 - 0
<i>Centers (open)</i>	1710
<i>Centers (closed)</i>	150
<i>Stroke</i>	1560

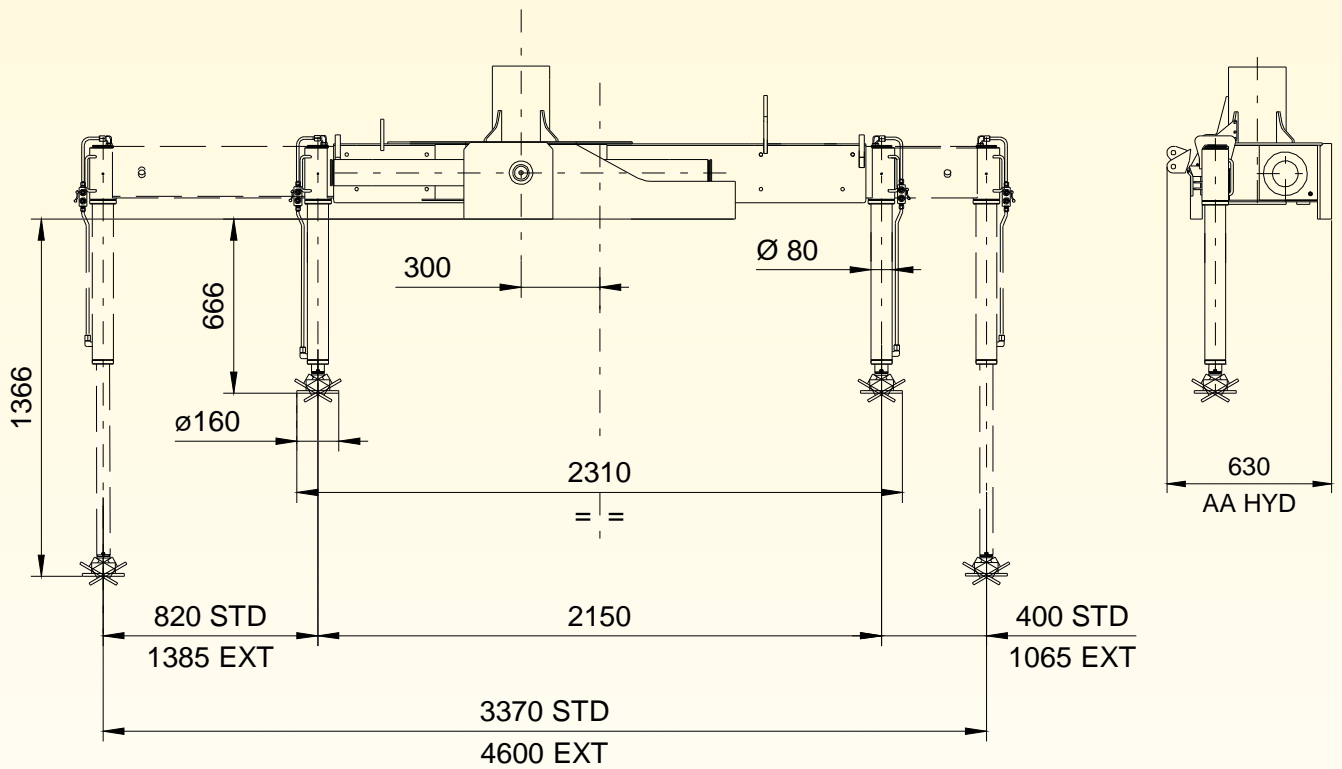
3TH EXTENSION CYL.	E4
<i>Cylinder bore</i>	50
<i>Cyl. ext. diameter</i>	60
<i>Rod diameter</i>	35 - 25
<i>Centers (open)</i>	1710
<i>Centers (closed)</i>	150
<i>Stroke</i>	1560

4TH EXTENSION CYL.	E4
<i>Cylinder bore</i>	50
<i>Cyl. ext. diameter</i>	60
<i>Rod diameter</i>	30 - 0
<i>Centers (open)</i>	1710
<i>Centers (closed)</i>	150
<i>Stroke</i>	1560

ROTATION CYLINDER	E2-E3-E4
<i>Cylinder bore</i>	90
<i>Cyl. ext. diameter</i>	100
<i>Rod diameter</i>	-
<i>Centers (open)</i>	-
<i>Centers (closed)</i>	-
<i>Stroke</i>	567

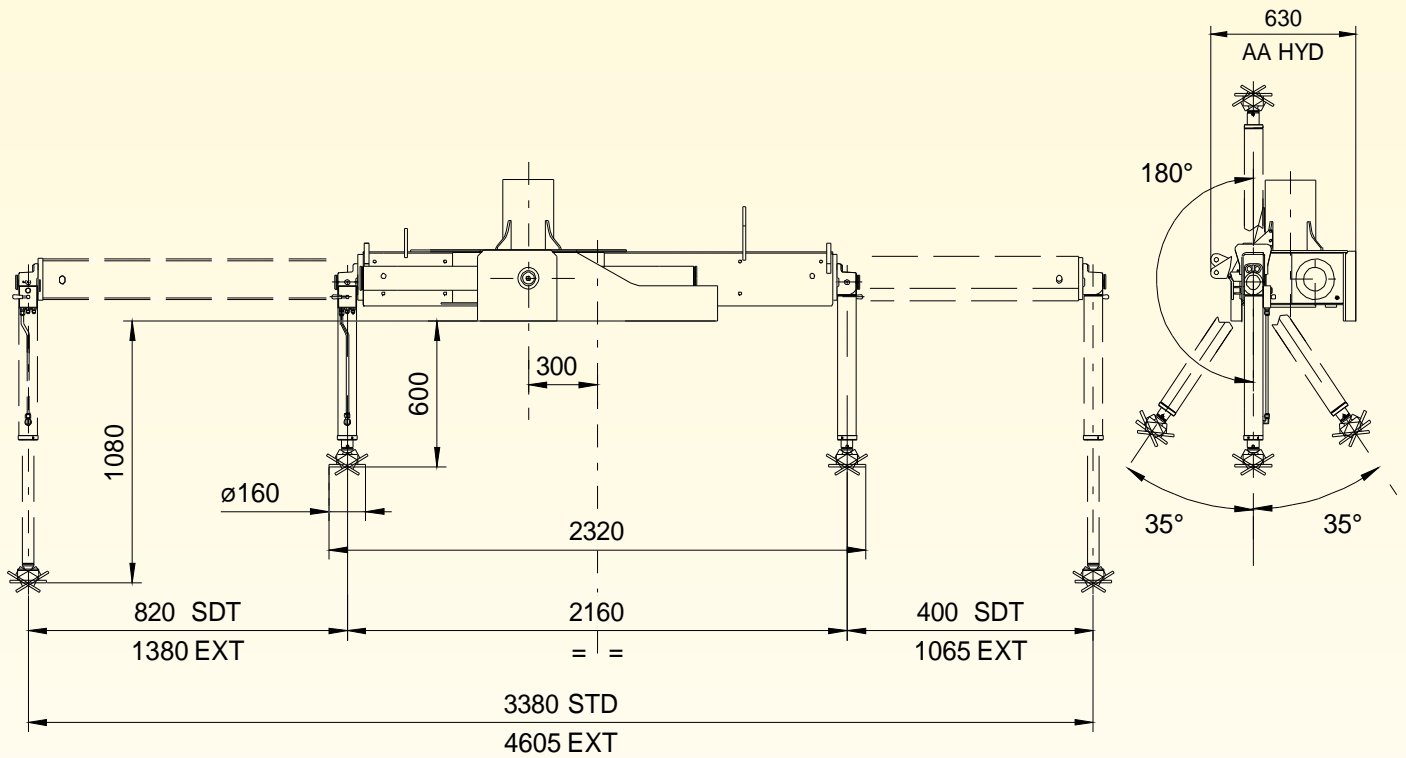
HA70 TECHNICAL SHEET

BASE DIMENSIONS WITH LONG STABILIZERS



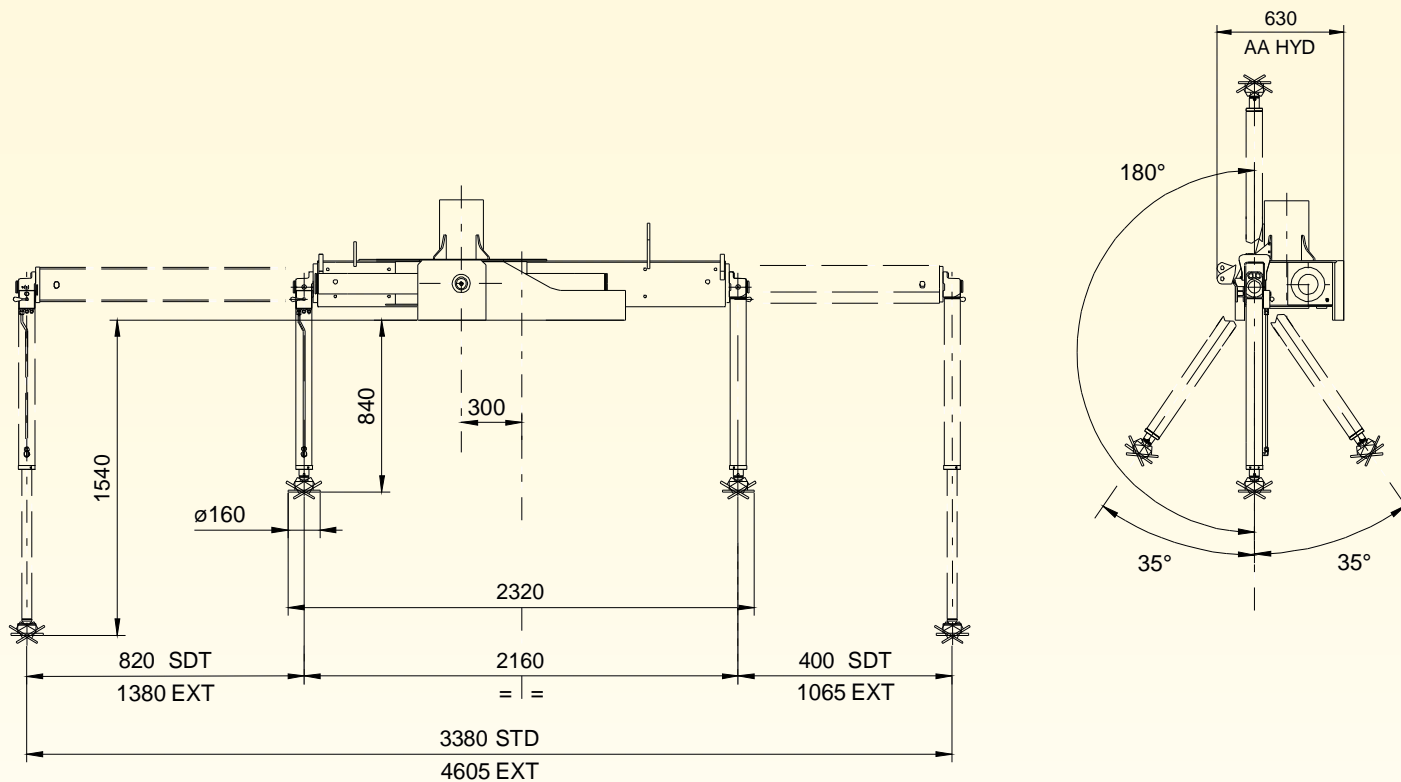
HA70 TECHNICAL SHEET

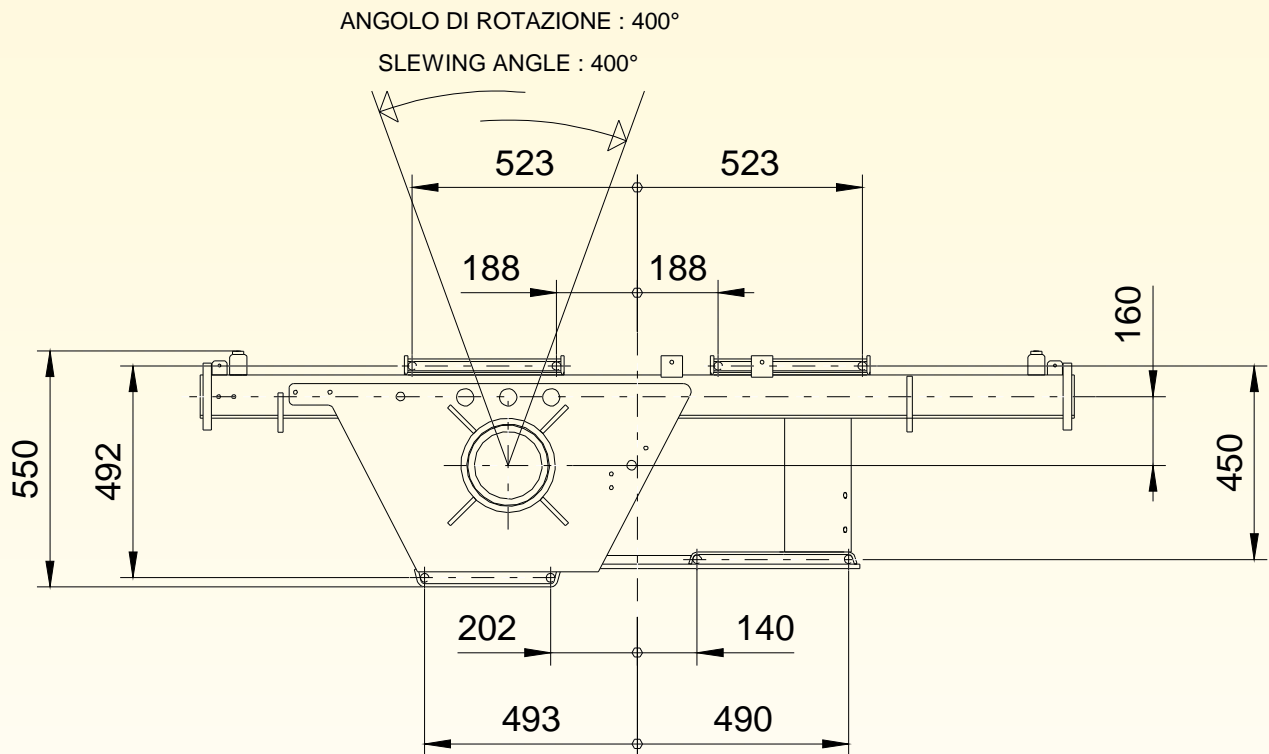
BASE DIMENSIONS WITH TILTING CYLINDERS



HA70 TECHNICAL SHEET

CROSSBAR WITH LONG TILTING STABILIZERS



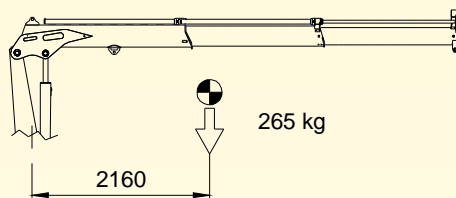


Mounting tie rods	N°8 M20x1.5 Mat. 42CrMo4 BNF (QT)
Rotation cylinder fixing bolts	N°6 M14x35 8.8 UNI 5931

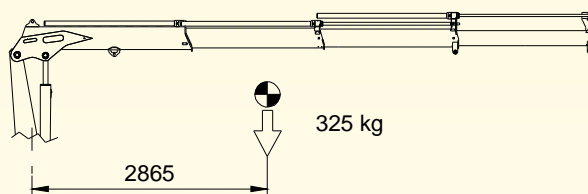
HA70 TECHNICAL SHEET

WEIGHTS – CENTER OF GRAVITY

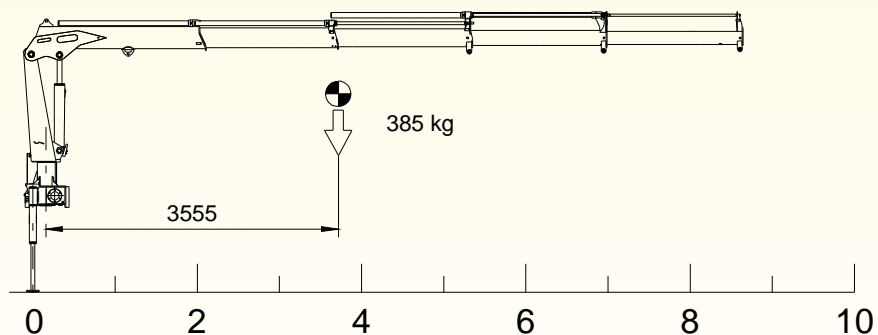
E2



E3



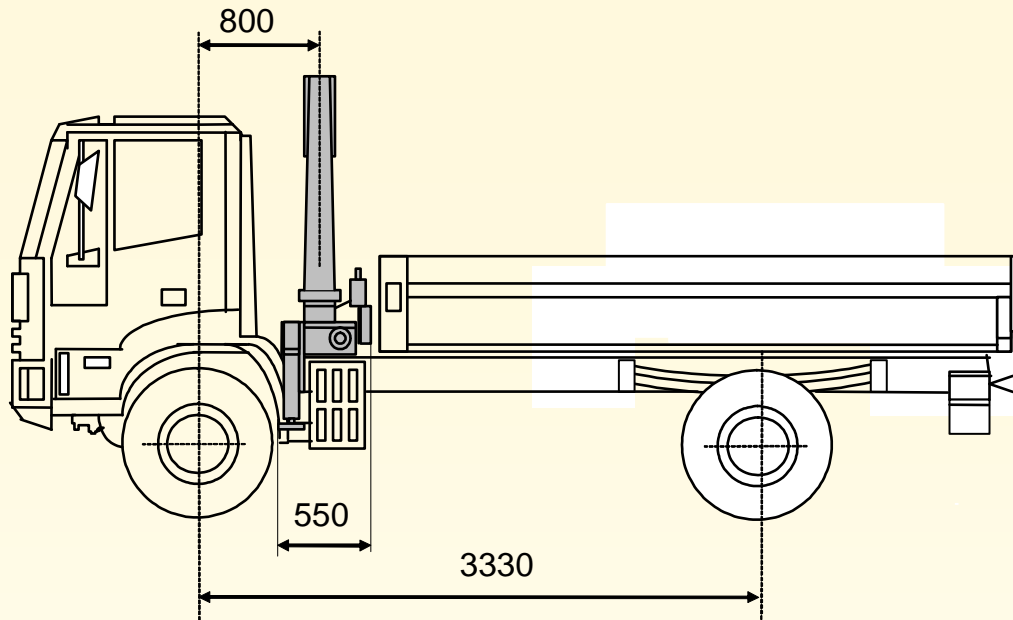
E4



	STD	EX	EX HYD
Fixed parts weight	615	660	690

HA70 TECHNICAL SHEET

MIN TRUCK WITH OUT SUPPLEMENTARY STABILIZERS



PTT (GVW) = 100 q

CHASSIS DATA

Front axle

Front axle tare weight = 2455 kg

Allowable front axle weight = 3600 kg

Rear axle

Rear axle tare weight = 1030 kg

OUTFIT WEIGHTS

Body weight = 300 kg

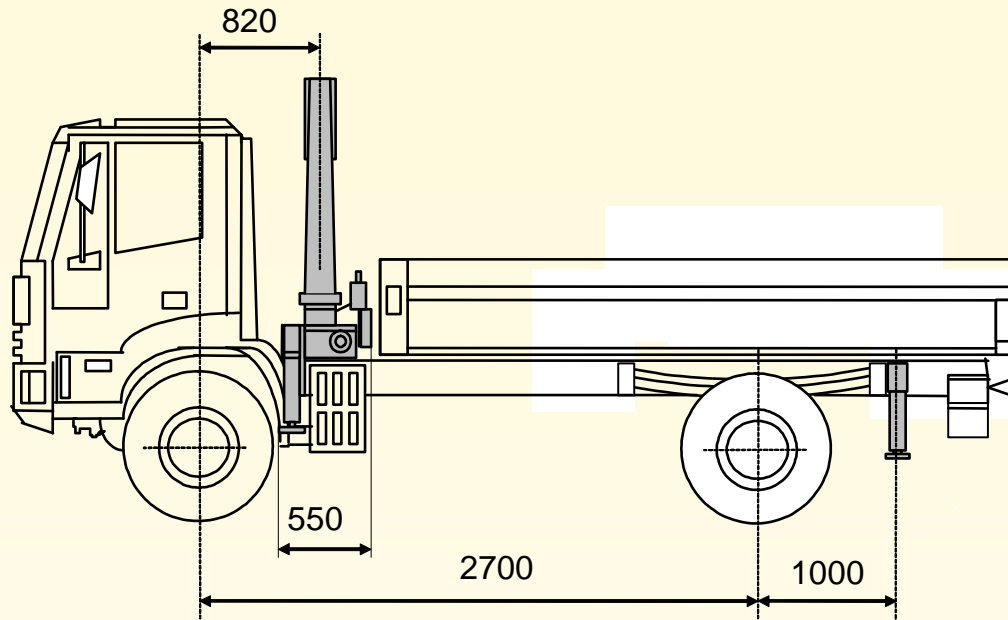
Crane weight = 1090 kg (HA70 E4 EX HYD)

Counterframe weight = 45 kg

Stability index = 1,66

HA70 TECHNICAL SHEET

MIN TRUCK WITH SUPPLEMENTARY STABILIZERS



PTT (GVW) = 65 q

CHASSIS DATA

Front axle

Front axle tare weight = 1995 kg

Allowable front axle weight = 2900 kg

Rear axle

Rear axle tare weight = 805 kg

OUTFIT WEIGHTS

Body weight = 300 kg

Crane weight = 1090 kg (HA70 E4 EX HYD)

Counterframe weight = 100 kg

Rear beam stabilizers

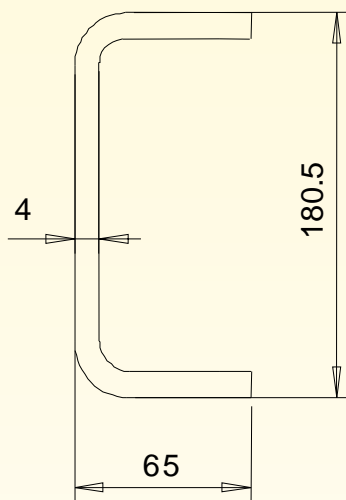
Min. width = 3000 mm

Rear stabilizer weight = 130 kg

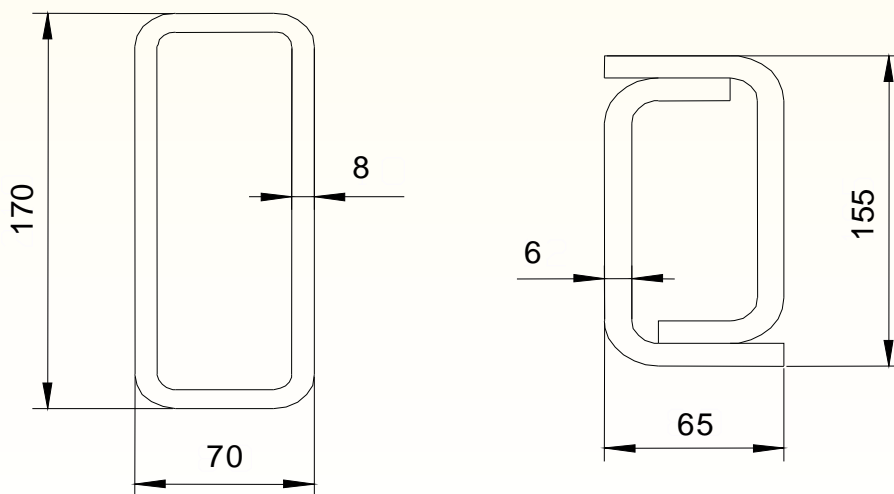
Stability index = 1,74

Max dynamic moment (daNm)	8600
---------------------------	------

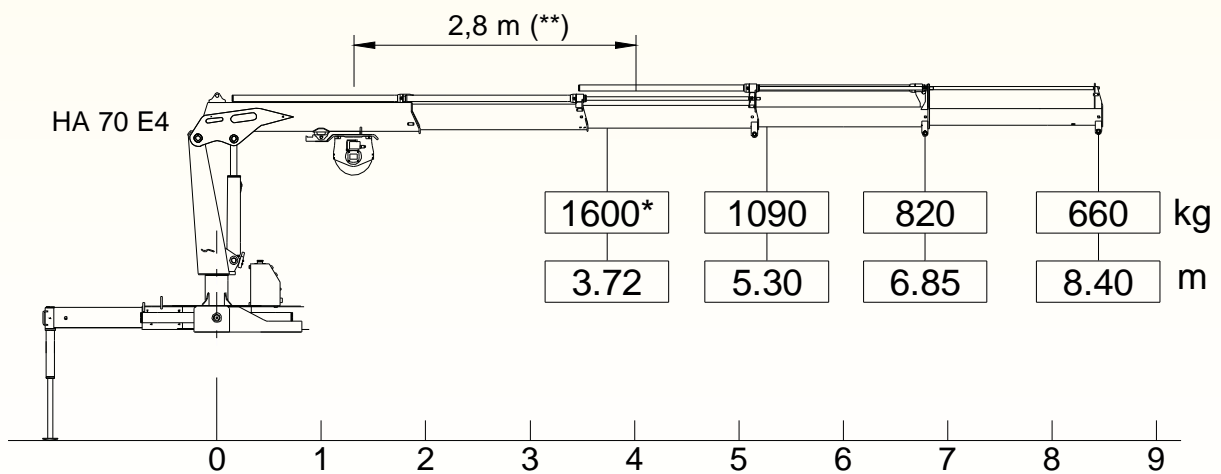
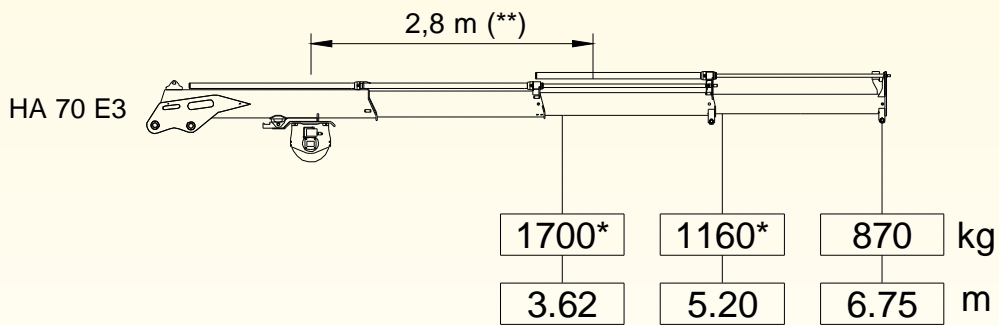
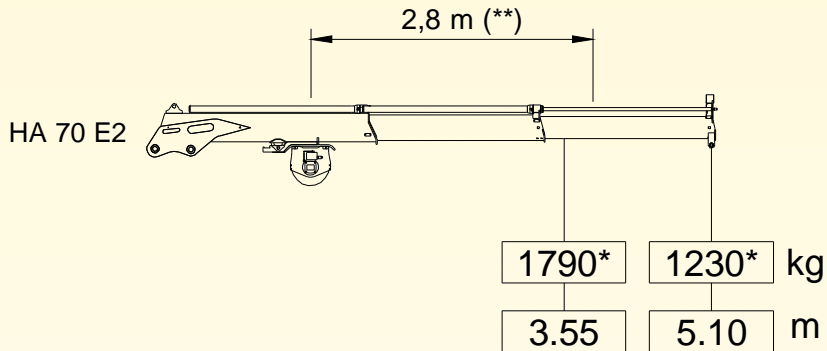
Min frame section (truck GVW 6.5 ton ; steel S355)



Min counterframe section (steel S355)



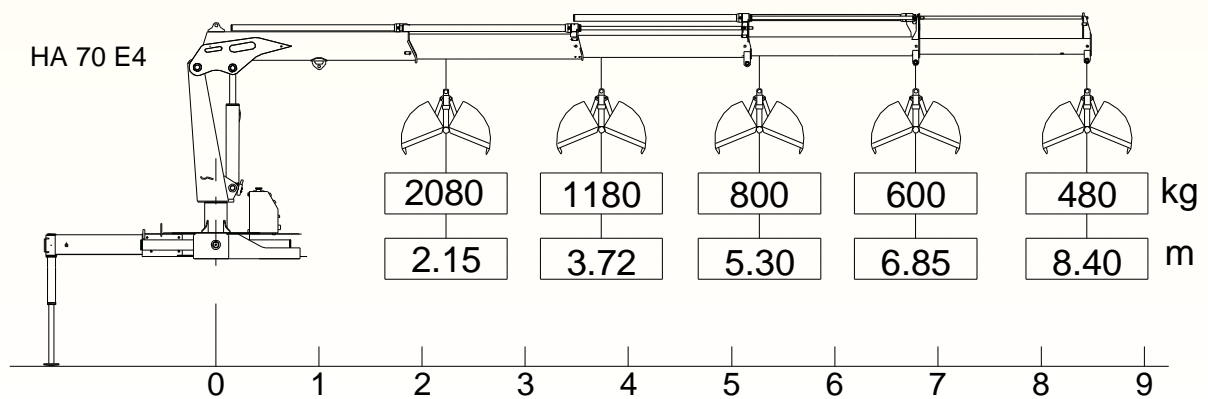
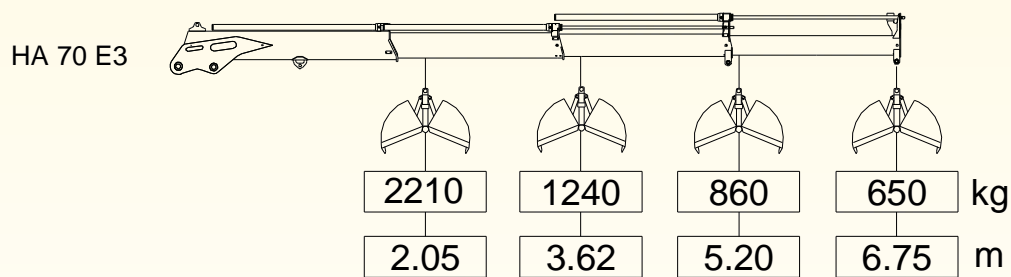
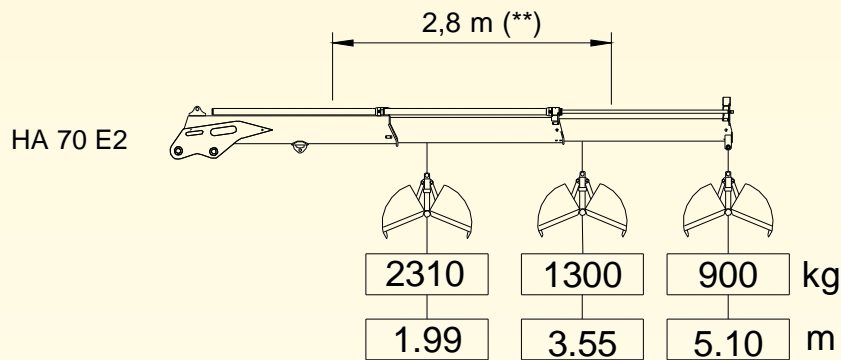
Max winch direct pull for crane at horizontal boom work position	1100 kg
--	---------



(*) = Winch pulley with double line pull

(*) = Rolle der Winde mit Doppelzug

Max allowable weight	200 kg
Max working pressure	200 bar



THE CAPACITIES OF THE ACTIVATED CRANES (FOR GRAB OR BUCKET) ARE DERATED BY 30% RESPECT TO THE STANDARD CRANES