



TRUCK MOUNTED CRANE HA33



www.hyvacrane.com
www.hyva.com

Max dynamic moment [daNm]	4330
---------------------------	------

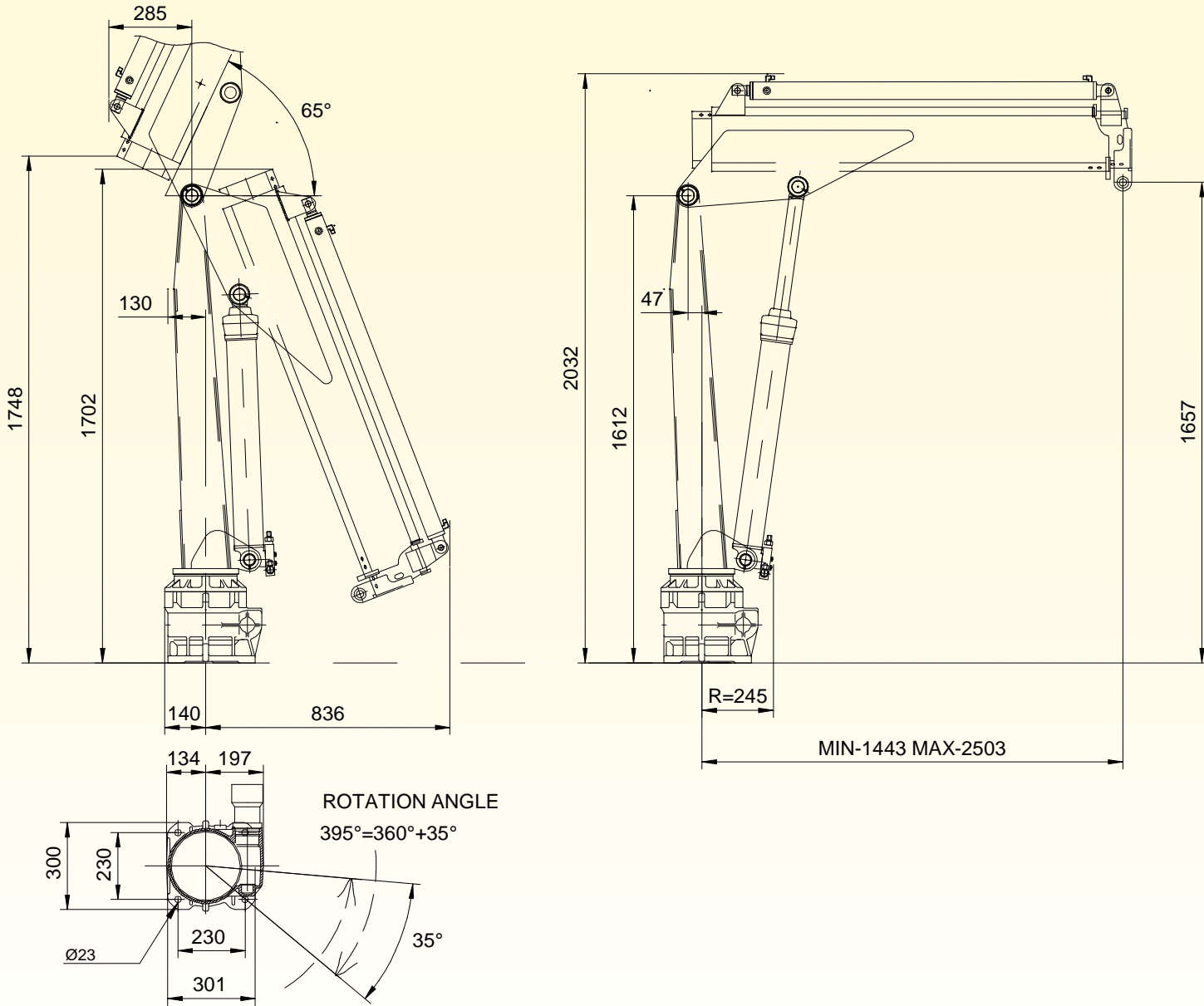
	Version	Q _{max}
Max capacity [kg]	E1	2420
	E2	2285
	E3	2155
	E4	2030

	Version	STD
Crane weight [kg] (Hydraulic version) (Included: Valve bank + Oil tank + Oil)	E1	305
	E2	339
	E3	371
	E4	399

Max working pressure	175 bar
Max oil flow to main relief valve	10 dm ³ /min
Oil tank capacity	17.5 dm ³
Slewing moment	450 daNm
Slewing angle	395°
Absorbed power	2.9 kW 3.9 HP
Design standard	DIN 15018 EN 12999
PTO Hydraulic crane versions	
Distributor Pressure line = 3/8" P valve port - 9/16-18 Jic Fitting mounted	
Distributor Tank line = 3/8" T valve port - 3/4-16Jic Fitting mounted	
Tank Suction line = 3/4" Plug mounted	
Return Filter line = 3/8" filter port - 3/4-16 Jic Fitting mounted	
ETR crane versions	
Distributor Pressure line = 3/8" P valve port - 9/16-18 Jic Fitting mounted	
Distributor Tank line = 3/8" T valve port - 3/4-16Jic Fitting mounted	
Power Pack Pressure line = 1/4" P port - 9/16-18 Jic Fitting mounted	
Power Pack Tank line = 1/4" T port - 9/16-18 Jic Fitting mounted	

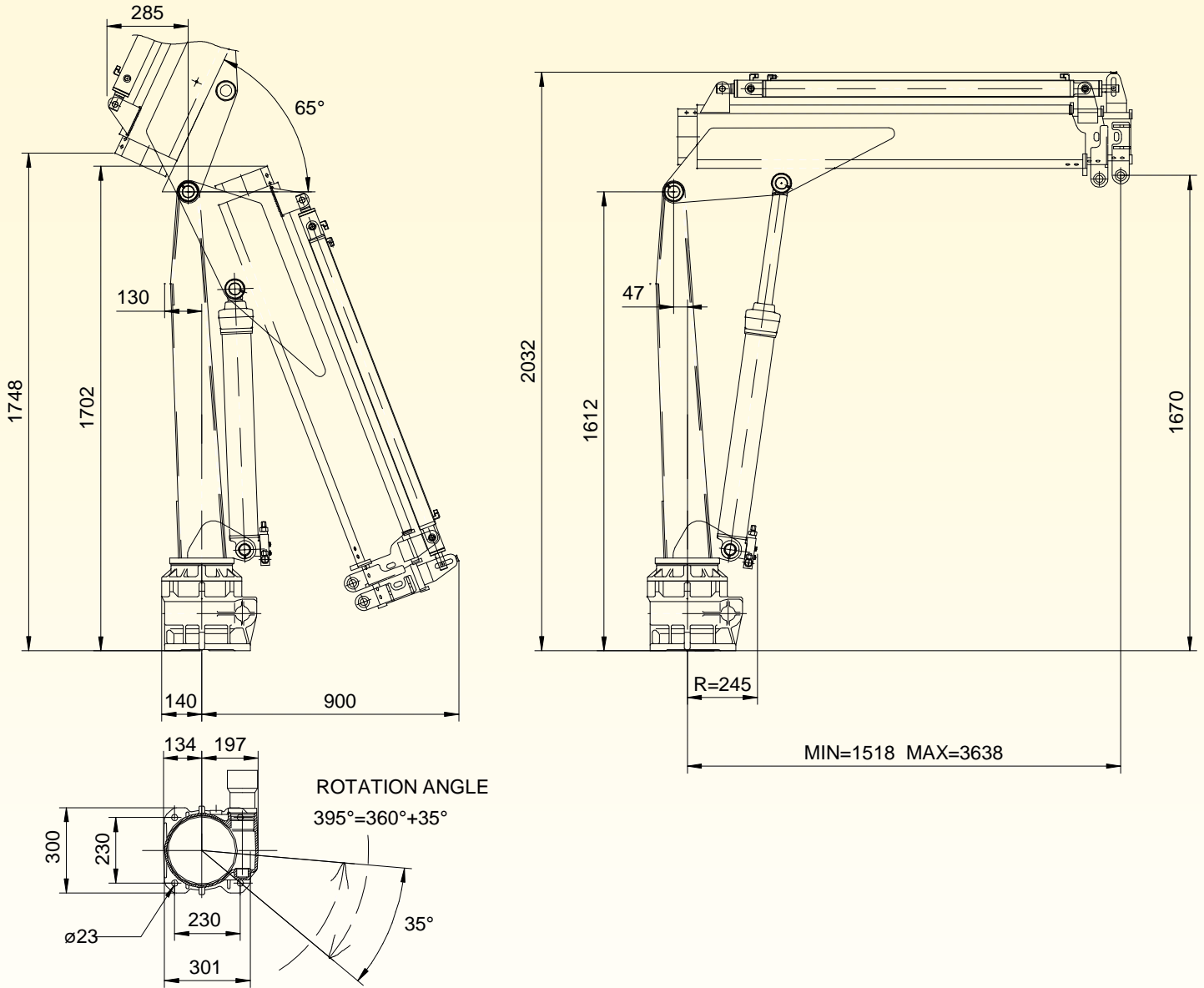
HA33 TECHNICAL SHEET

OVERALL DIMENSIONS E1



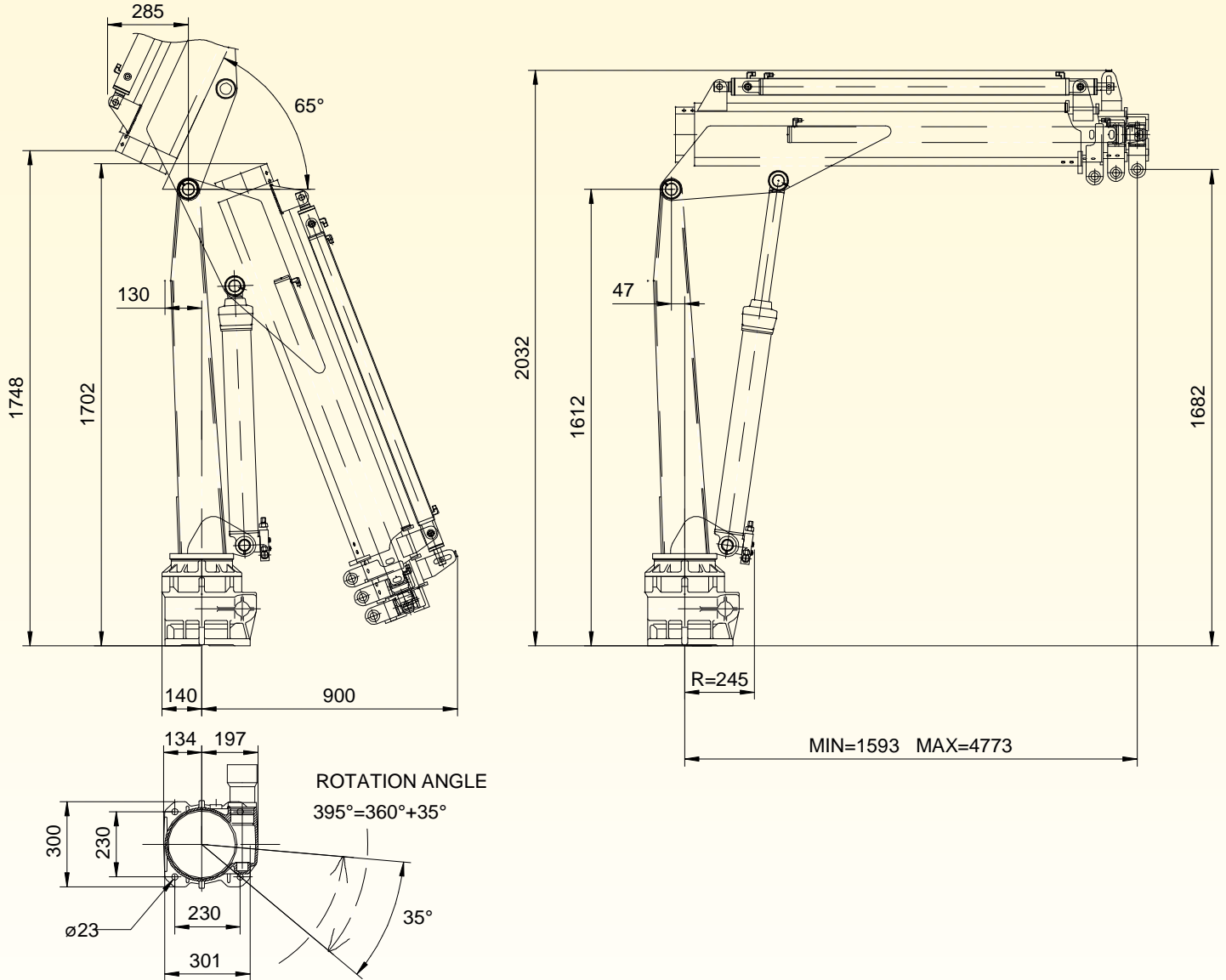
HA33 TECHNICAL SHEET

OVERALL DIMENSIONS E2



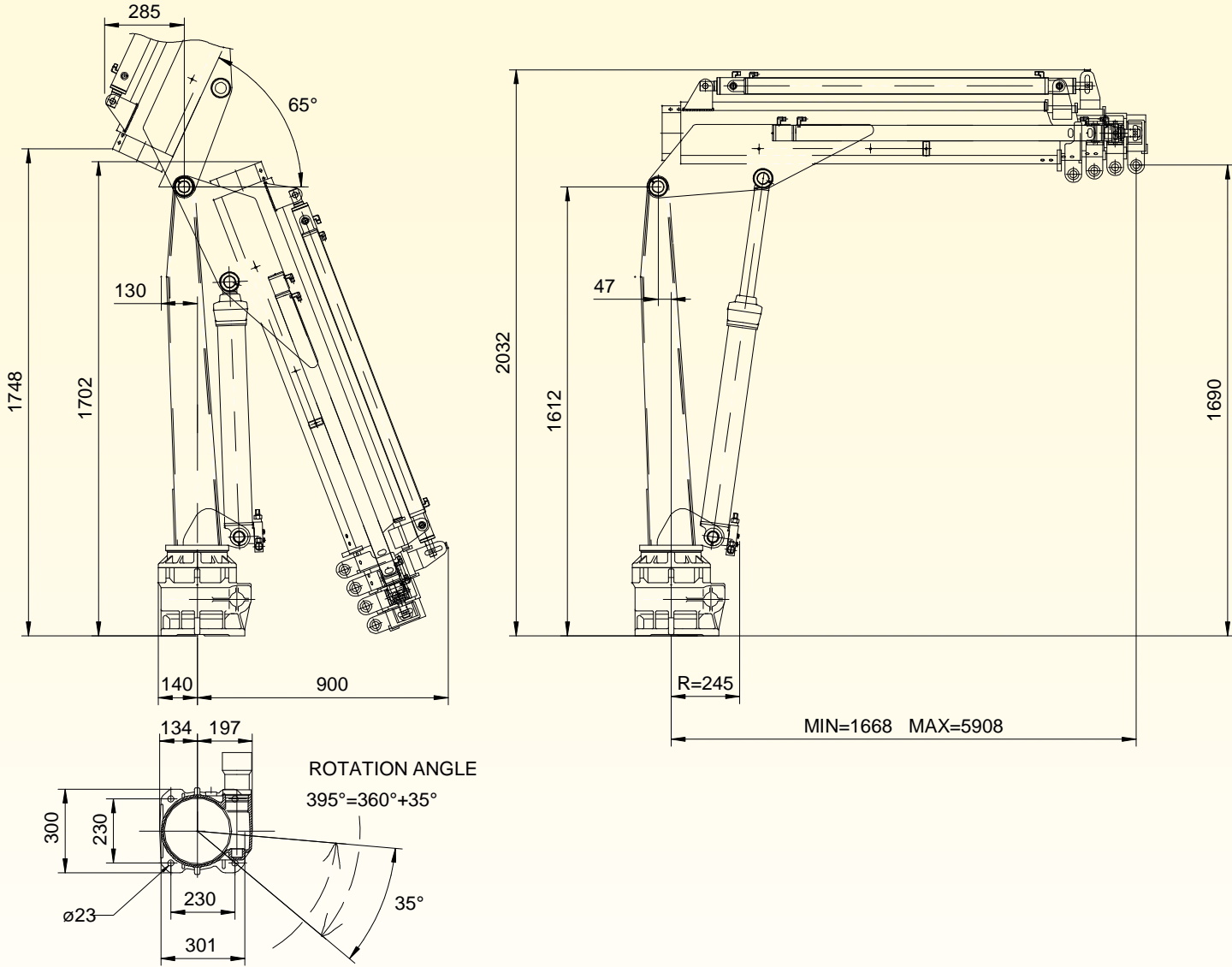
HA33 TECHNICAL SHEET

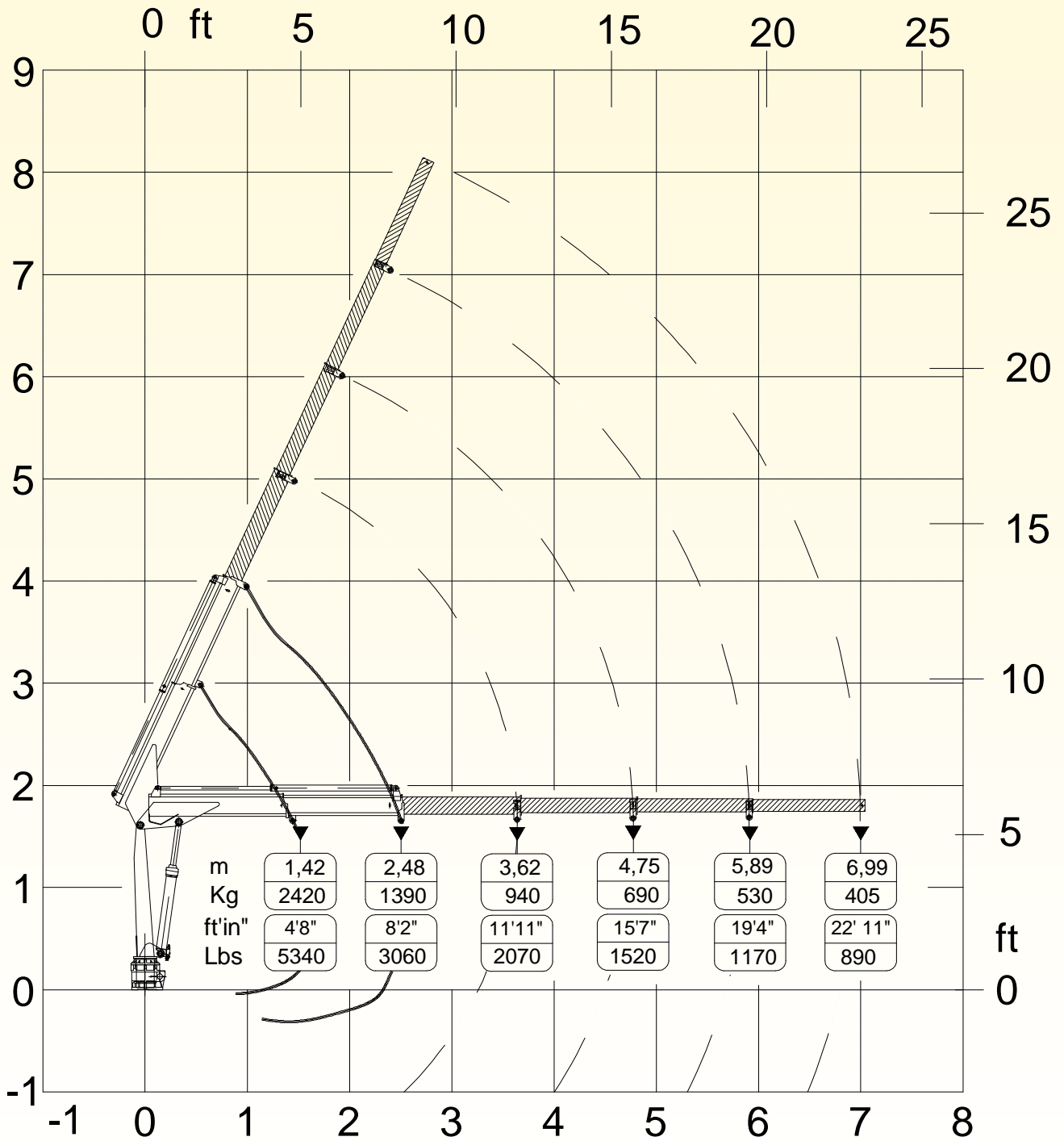
OVERALL DIMENSIONS E3

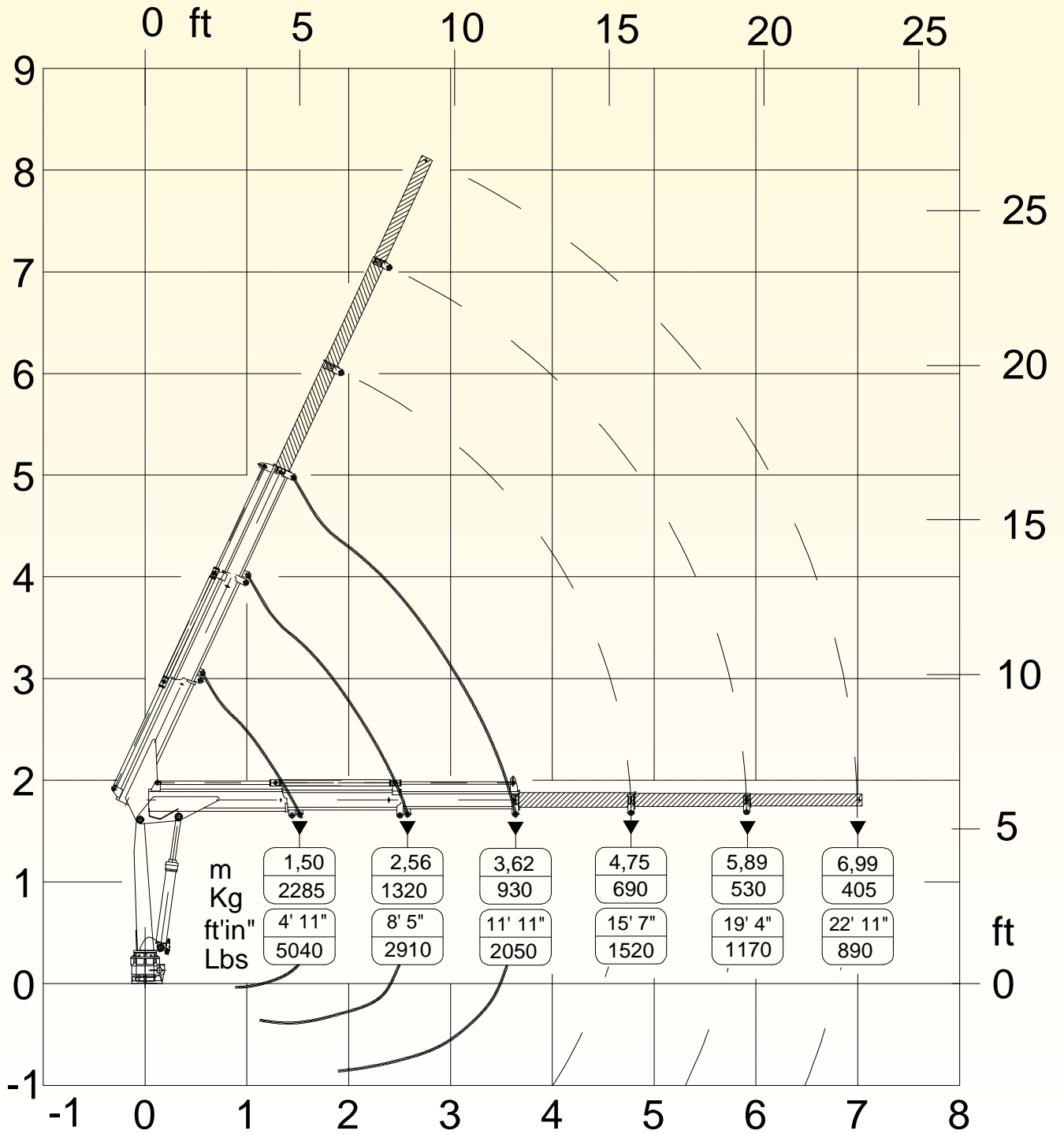


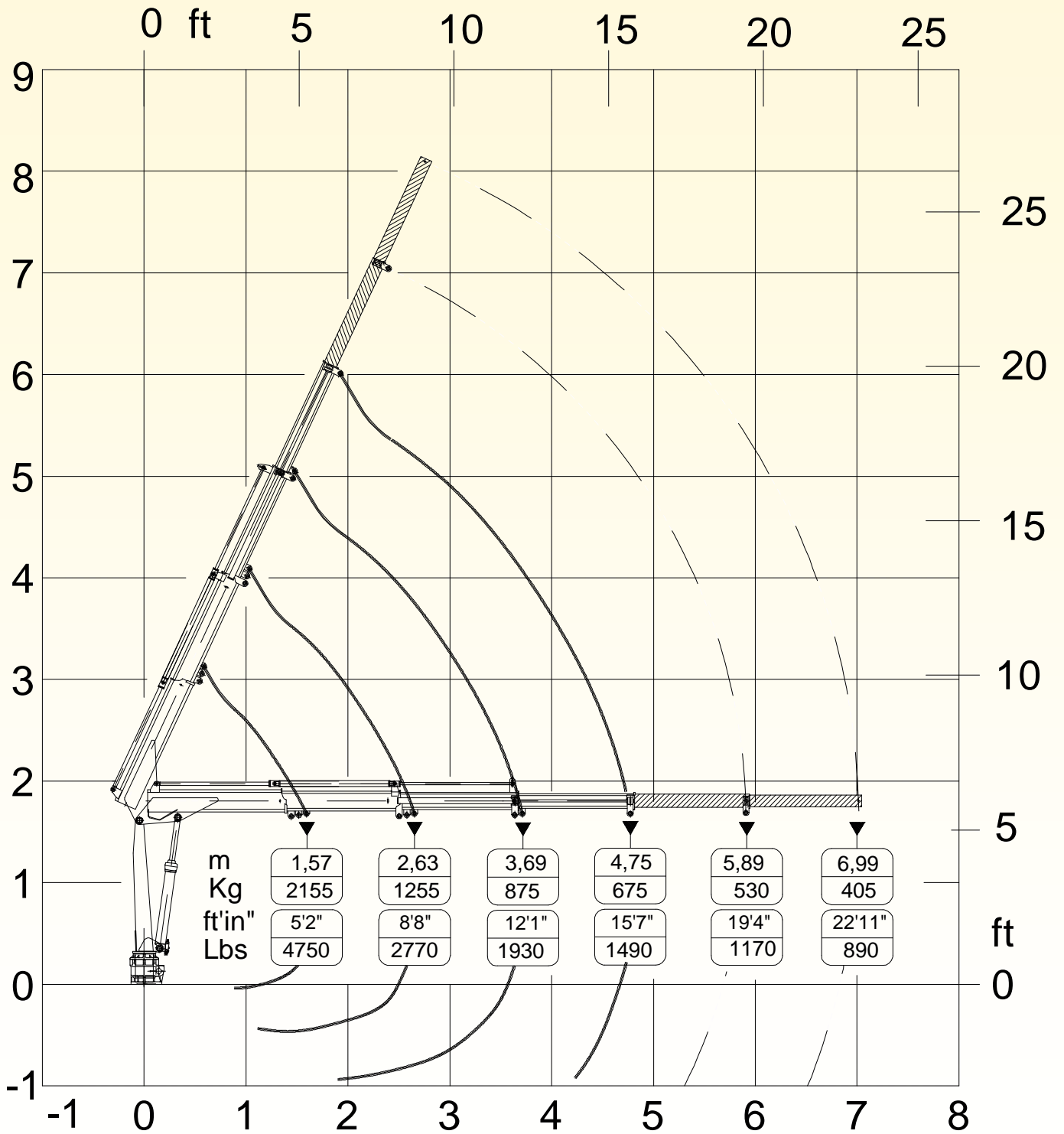
HA33 TECHNICAL SHEET

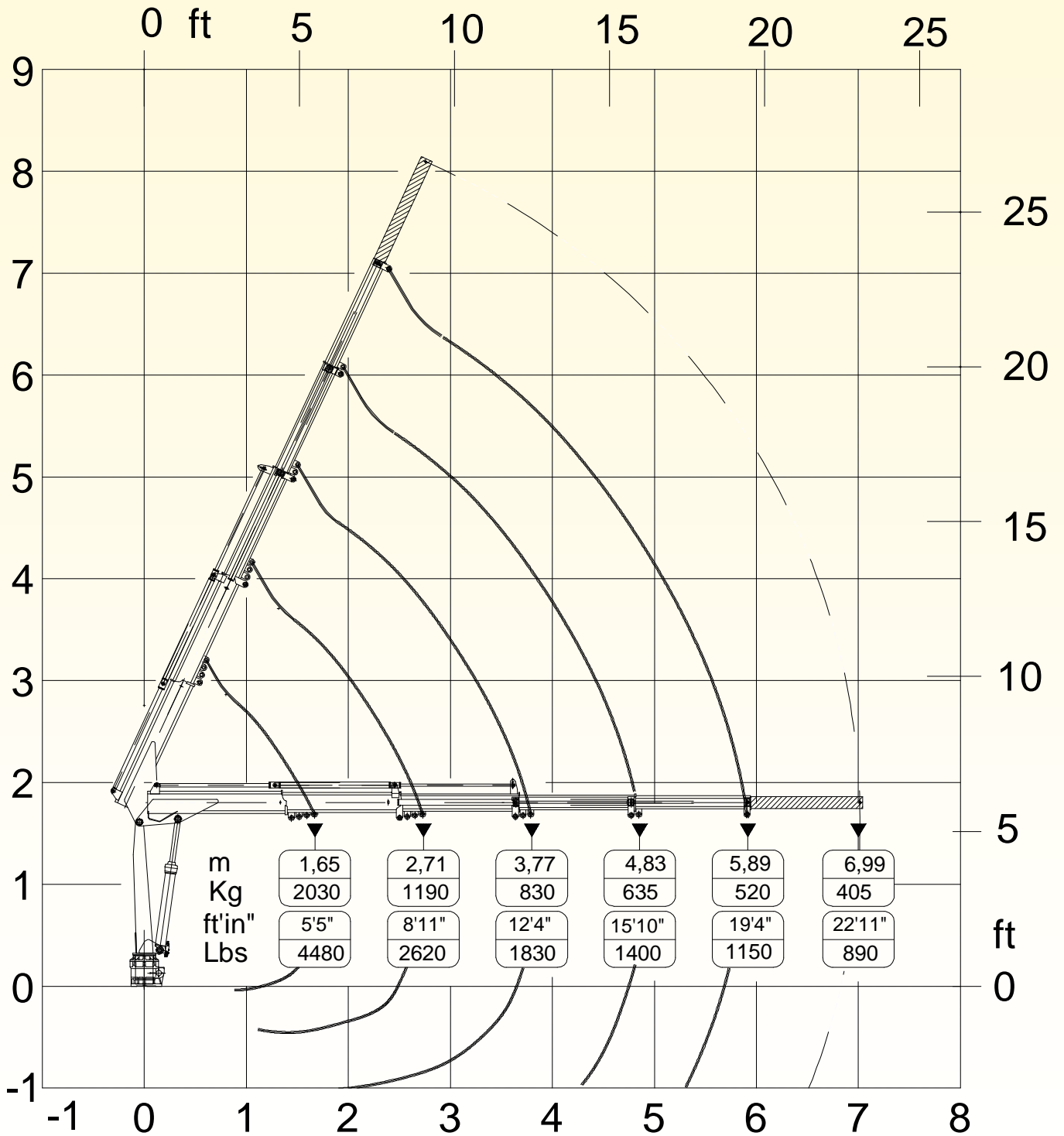
OVERALL DIMENSIONS E4





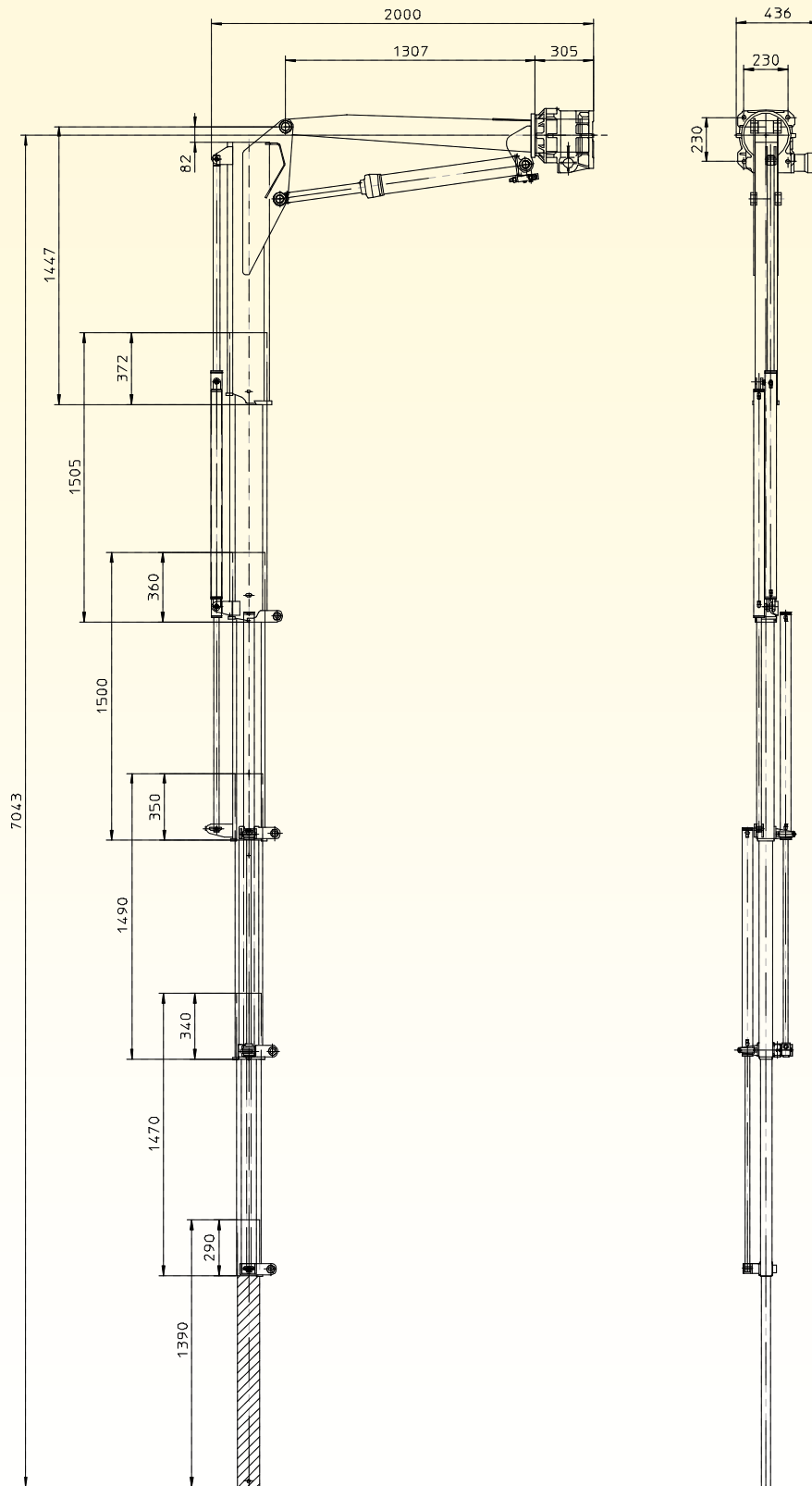






HA33 TECHNICAL SHEET

COLUMN - BOOM - DIMENSIONS



CYLINDERS AND PINS DIMENSIONS

LIFTING CYLINDER

<i>Cylinder bore</i>	90
<i>Cyl. ext. diameter</i>	100
<i>Rod diameter</i>	50
<i>Centers (open)</i>	1612.5
<i>Centers (closed)</i>	916.5
<i>Stroke</i>	696
<i>Artic. pin Ø</i>	40
<i>Pin material</i>	C40 NORM

1ST EXTENSION CYLINDER

<i>Cylinder bore</i>	50
<i>Cyl. ext. diameter</i>	60
<i>Rod diameter</i>	35
<i>Centers (open)</i>	2330
<i>Centers (closed)</i>	1270
<i>Stroke</i>	1060
<i>Artic. pin Ø</i>	20
<i>Pin material</i>	C40

2ND EXTENSION CYLINDER

<i>Cylinder bore</i>	45
<i>Cyl. ext. diameter</i>	55
<i>Rod diameter</i>	25
<i>Centers (open)</i>	2030
<i>Centers (closed)</i>	1270
<i>Stroke</i>	1060
<i>Artic. pin Ø</i>	15
<i>Pin material</i>	39NiCrMo3 QT

3RD EXTENSION CYLINDER

<i>Alesaggio Cylinder bore</i>	45
<i>Diametro esterno Cyl. ext. diameter</i>	55
<i>Diametro stelo Rod diameter</i>	25
<i>Interasse aperto Centers (open)</i>	1131.5
<i>Interasse chiuso Centers (closed)</i>	71.5
<i>Corsa Stroke</i>	1060
<i>Artic. pin Ø</i>	N° 2 M10
<i>Pin material</i>	Classe 8.8

4ND EXTENSION CYLINDER

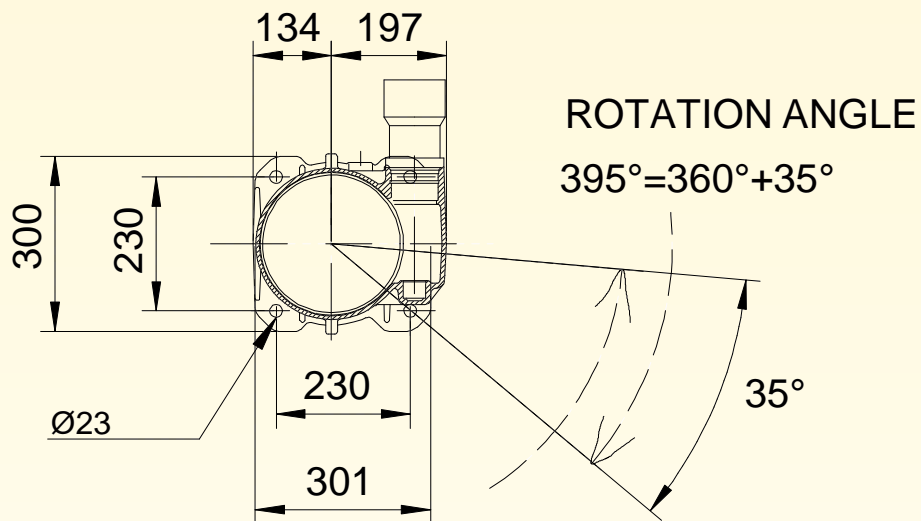
<i>Cylinder bore</i>	45
<i>Cyl. ext. diameter</i>	55
<i>Rod diameter</i>	25
<i>Centers (open)</i>	1131.5
<i>Centers (closed)</i>	71.5
<i>Stroke</i>	1060
<i>Artic. pin Ø</i>	N°2 M10
<i>Pin material</i>	Classe 8.8

TILTING STABILIZER CYLINDER

<i>Cylinder bore</i>	70
<i>Cyl. ext. diameter</i>	80
<i>Rod diameter</i>	50
<i>Pitch (open)</i>	1198
<i>Pitch (closed)</i>	750
<i>Stroke</i>	448
<i>Artic. pin Ø</i>	60
<i>Pin steel</i>	C40 NORM

HA33 TECHNICAL SHEET

BASE DIMENSIONS TIE MOUNTING RODS

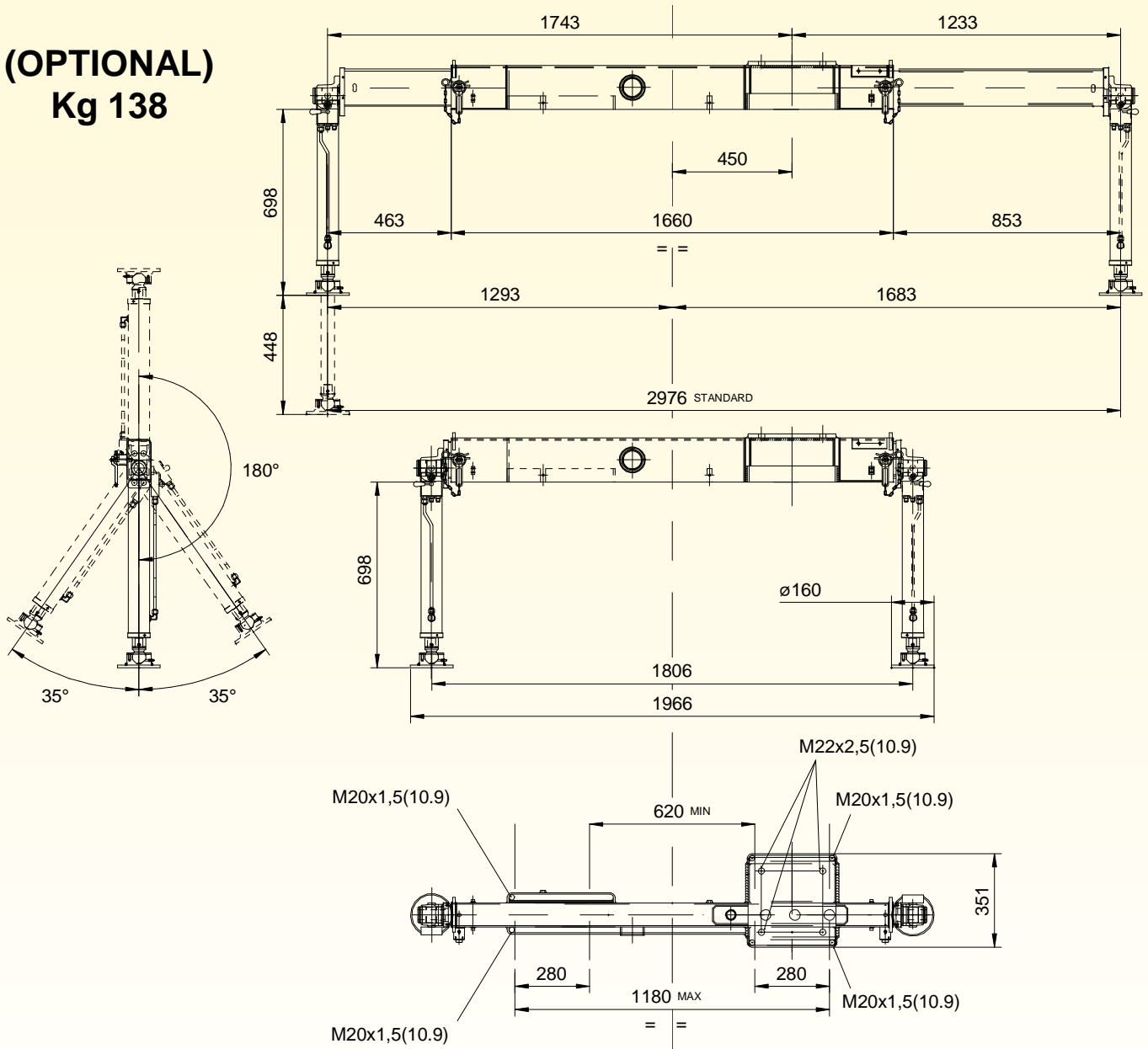


Fixing bolts	N°4 M22x2.5 L=80 10.9 DIN 6914	Tightening torque	360 Nm
---------------------	-----------------------------------	--------------------------	--------

HA33 TECHNICAL SHEET

STANDARD STABILIZER DIMENSIONS WITH STD STABILISER JACK

**(OPTIONAL)
Kg 138**

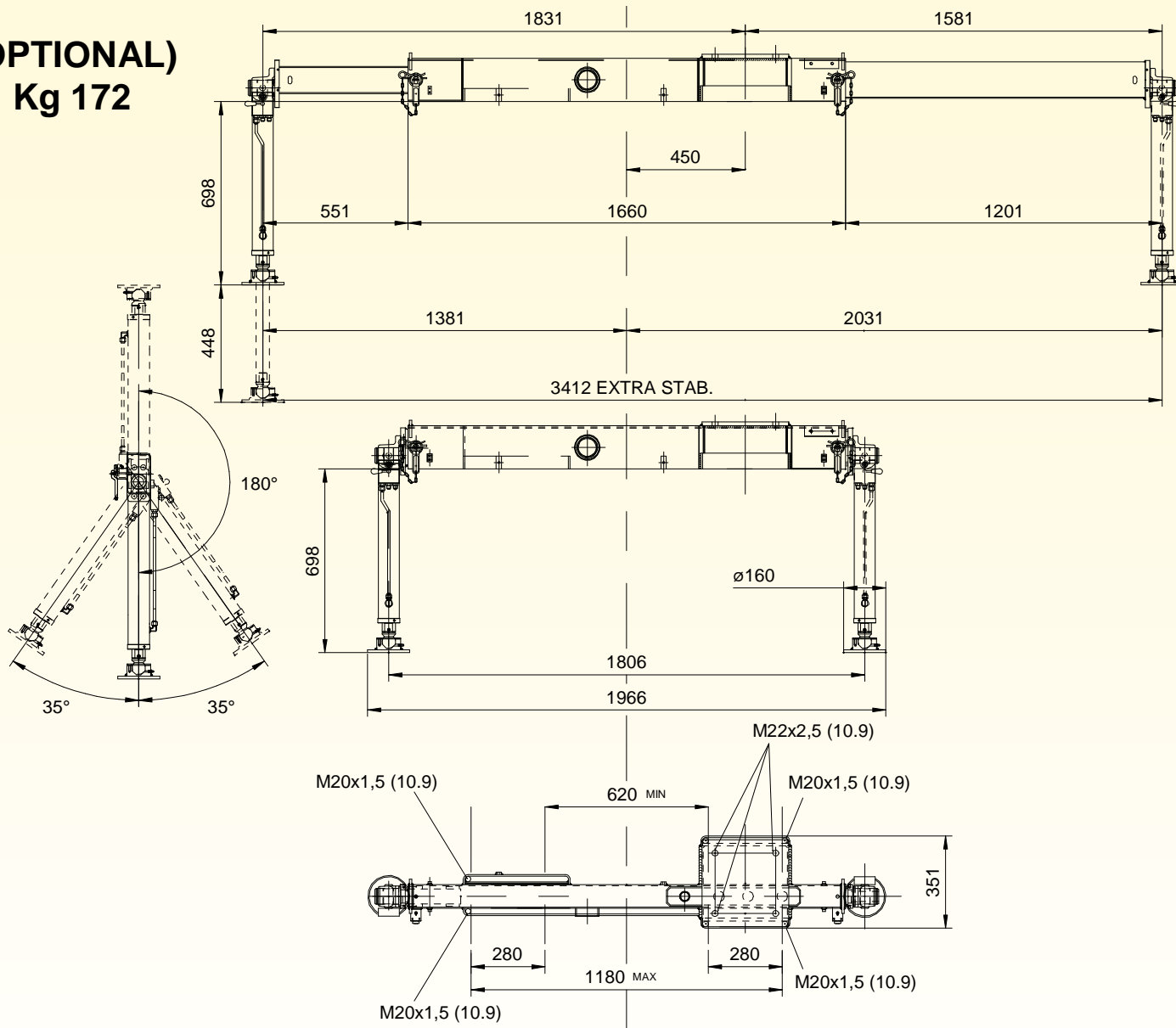


Fixing bolts	N°8 M20x1.5 L=700 10.9	Tightening torque	250 Nm
Max force on the stabilizer leg		3511 daN	
Max standard stabilizer pressure on the round (D=160mm)		17.5 daN/cm ²	

HA33 TECHNICAL SHEET

EXTRA STABILIZER DIMENSIONS WITH STD STABILISER JACK

(OPTIONAL)
Kg 172

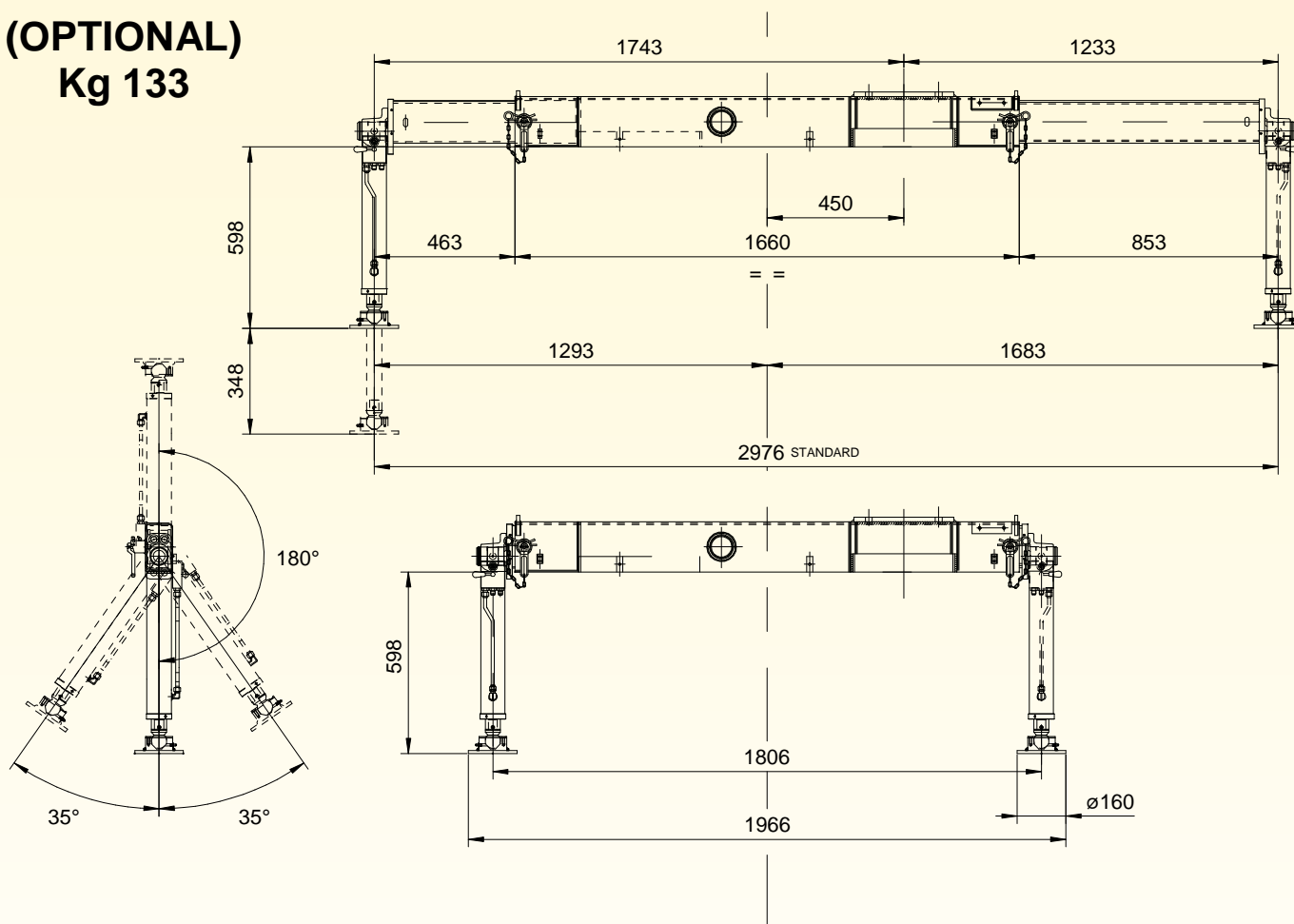


Fixing bolts	N°8 M20x1.5 L=700 10.9	Tightening torque	250 Nm
Max force on the stabilizer extra wide opening			2739 daN
Max extra wide stabilizer pressure on the round (D=160mm)			13.6 daN/cm ²

HA33 TECHNICAL SHEET

STANDARD STABILIZER DIMENSIONS WITH SHORT STABILISER JACK

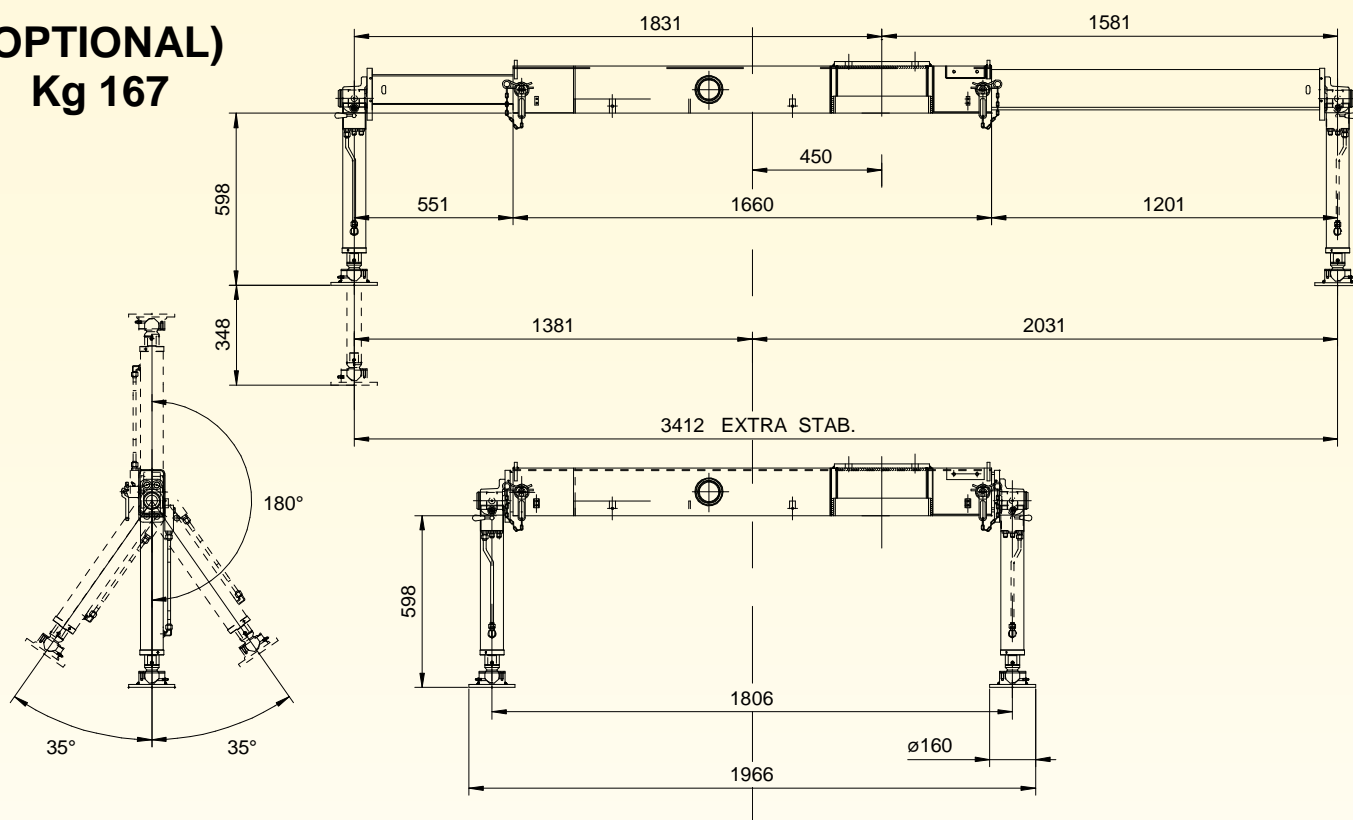
(OPTIONAL)
Kg 133



HA33 TECHNICAL SHEET

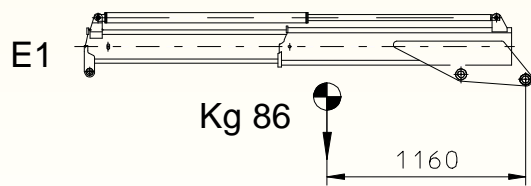
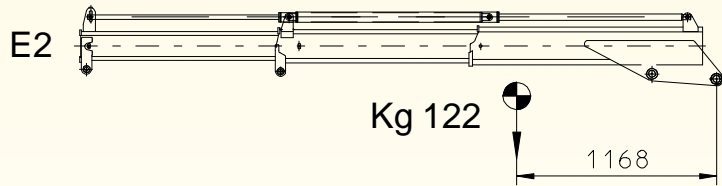
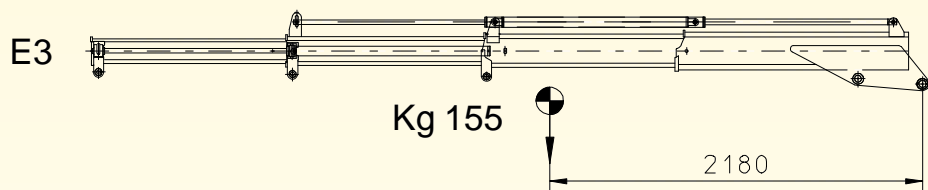
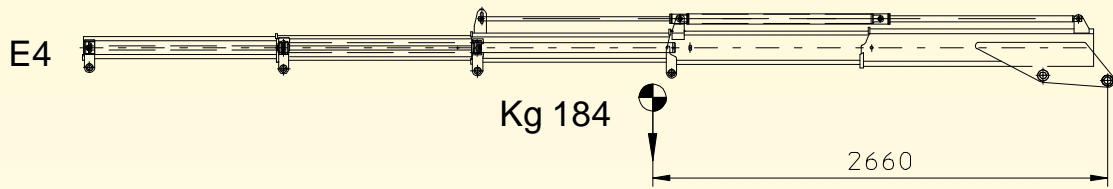
EXTRA STABILIZER DIMENSIONS WITH SHORT STABILISER JACK

(OPTIONAL)
Kg 167

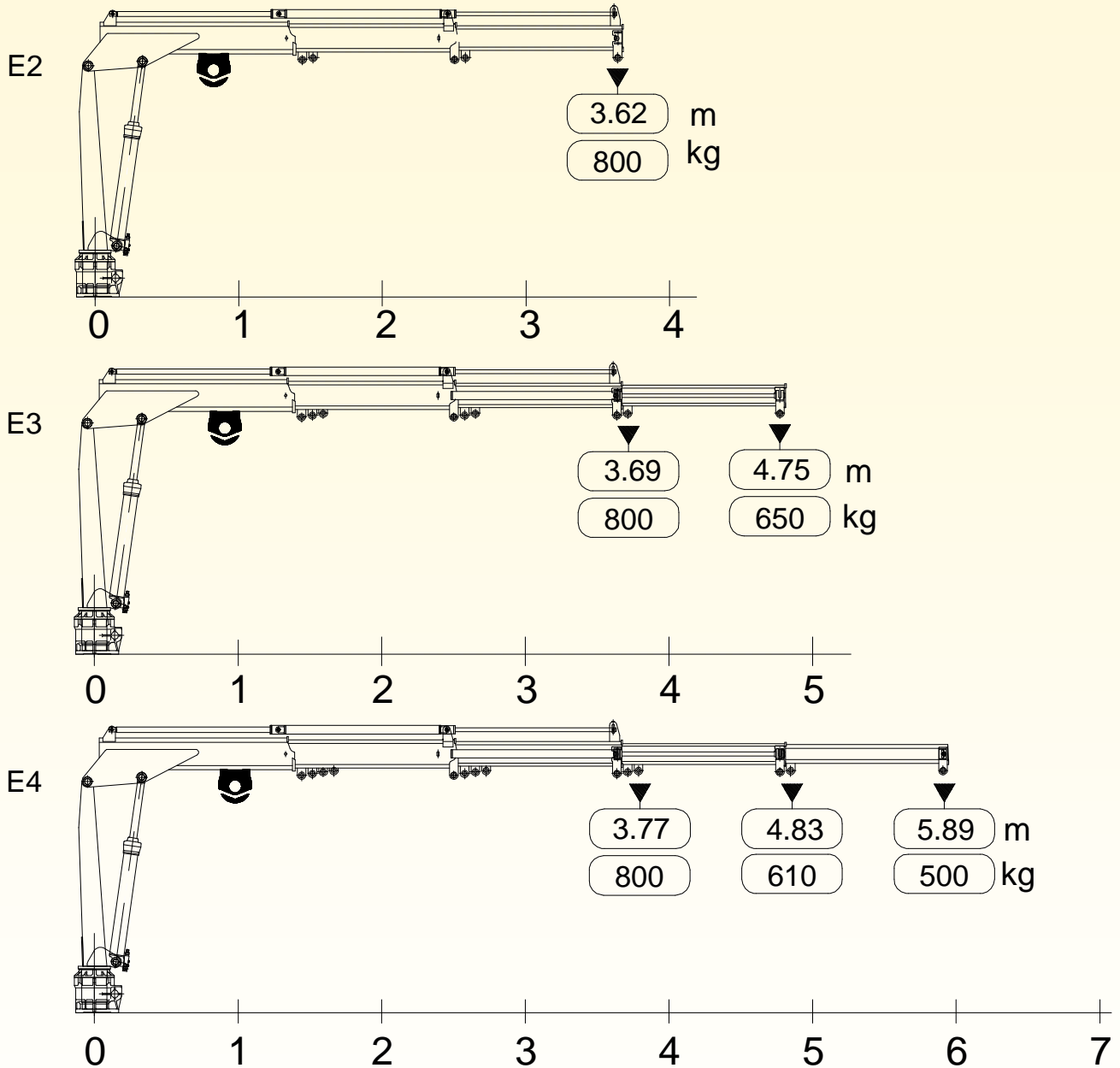


HA33 TECHNICAL SHEET

WEIGHTS – CENTERS OF GRAVITY



Fixed parts weight	Crane only
	186



CRANE E1 -E2

Max winch direct pull [kg]	800
CRANE E3 -E4	
Max winch direct pull [kg]	500

Max allowable weight	70 kg
Max working pressure	140 bar

