



TRUCK MOUNTED CRANE

HA 15



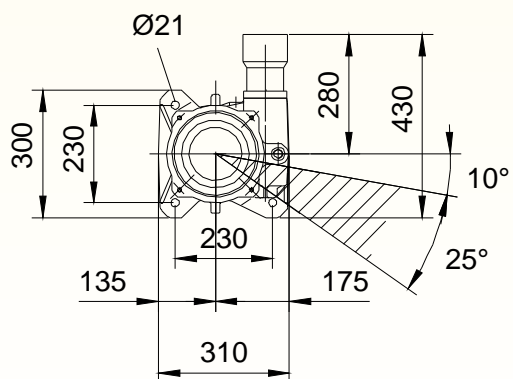
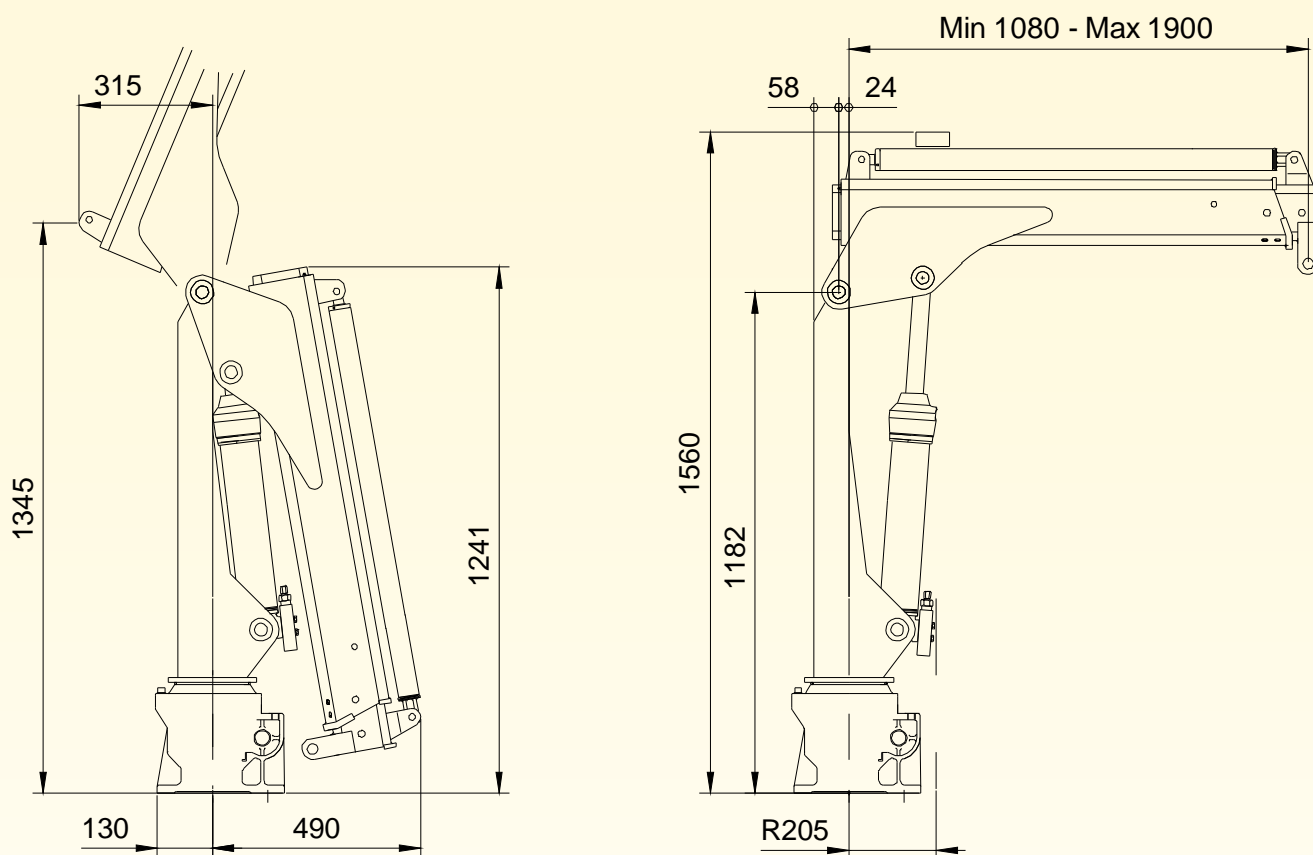
www.hyvacrane.com
www.hyva.com

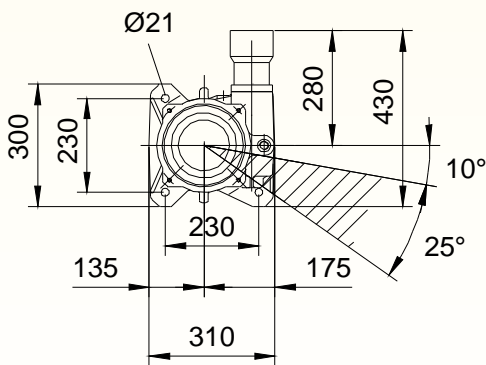
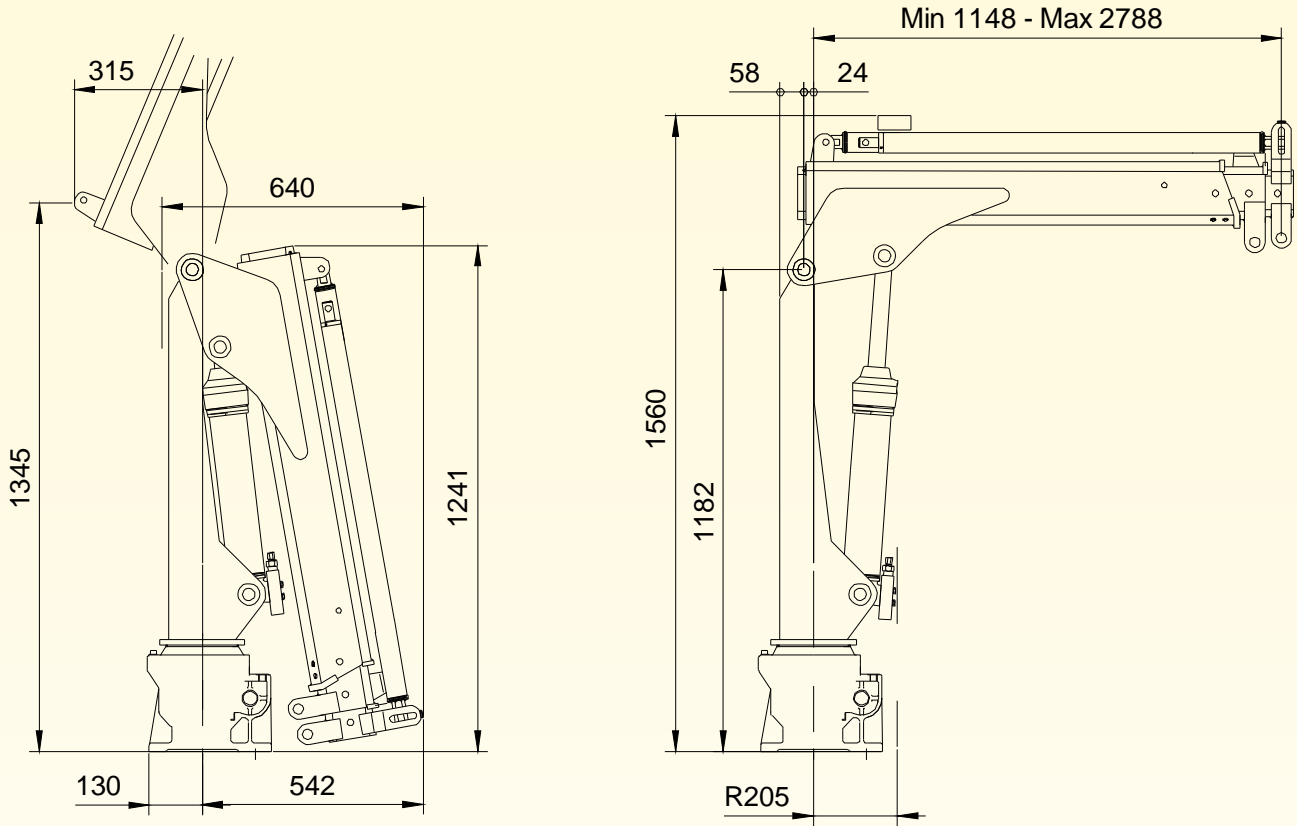
Max dynamic moment [daNm]	1570
---------------------------	------

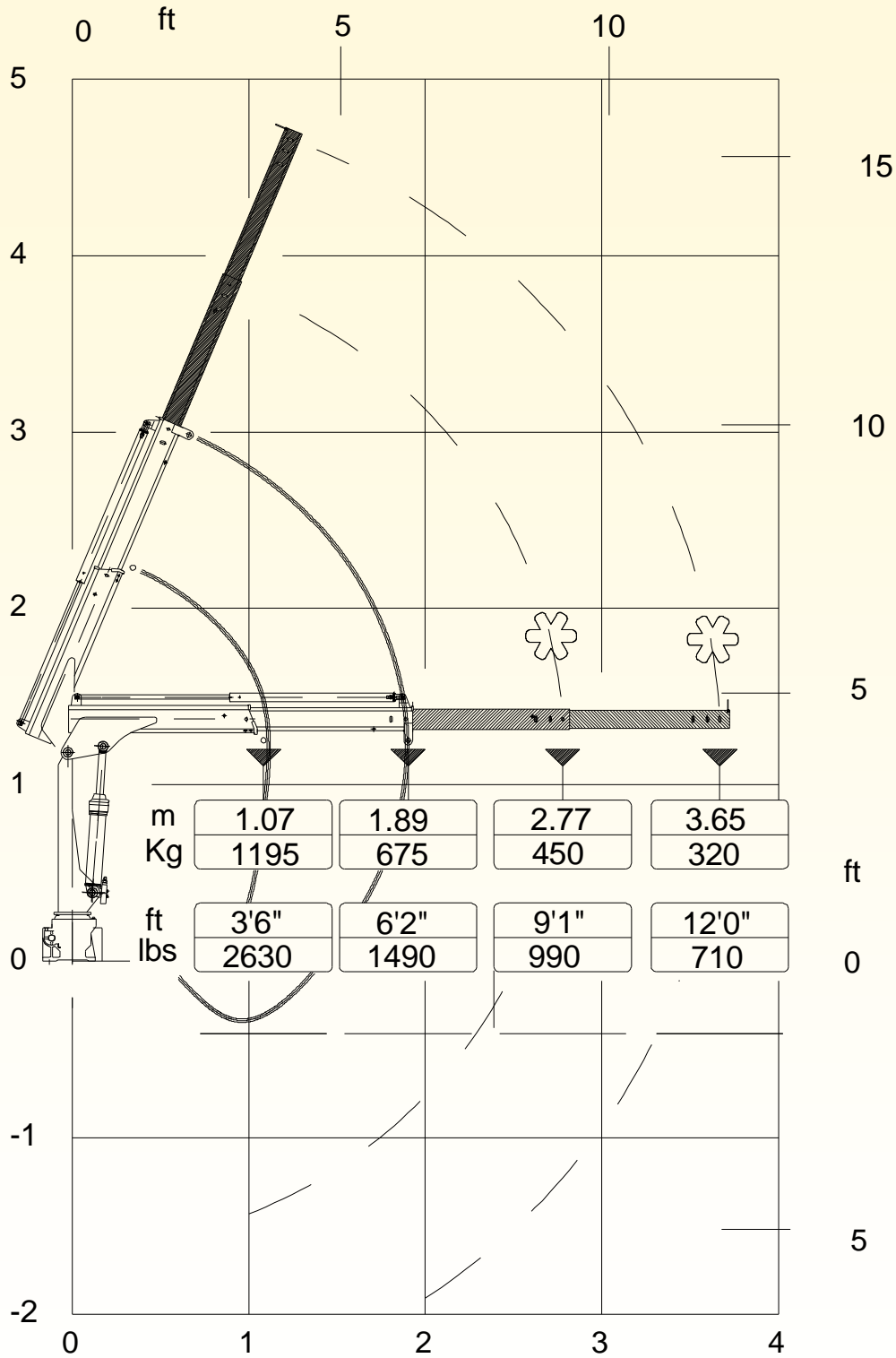
	Version	Q _{max}
Max capacity [kg]	E1	1195
	E2	1115

	Version	STD
Crane weight [kg]	E1	174
	E2	199

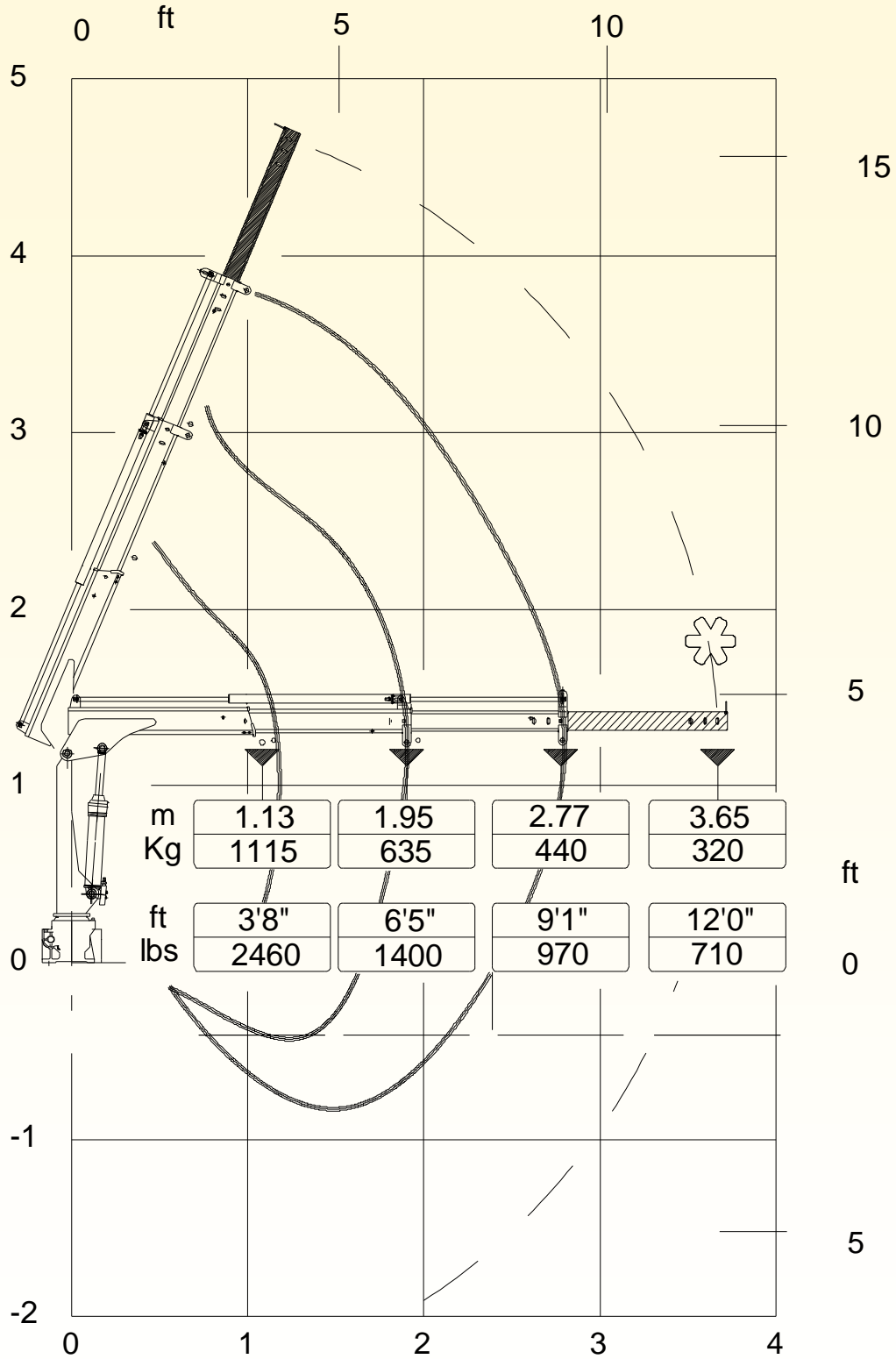
Max force on the standard stabilizer leg	1207 DaN 1788 DaN
Max standard stabilizer pressure on the ground (D=110) Max standard stabilizer pressure on the ground (D=150)	12.7 daN/cm ² 10.1 daN/cm ²
Max working pressure	160 bar
Max oil flow to main relief valve	8 dm ³ /min
Oil tank capacity	17.5 dm ³
Slewing moment	350 daNm
Slewing angle	335°
Absorbed power	2.2 kW 3.0 HP
Design standard	DIN 15018 EN 12999
PTO Hydraulic crane versions	
Distributor Pressure line = 3/8" P valve port - 9/16-18 Jic Fitting mounted	
Distributor Tank line = 3/8" T valve port -3/4-16Jic Fitting mounted	
Tank Suction line = 3/4" Plug mounted	
Return Filter line = 3/8" filter port - 3/4-16 Jic Fitting mounted	
ETR crane versions	
Distributor Pressure line = 3/8" P valve port - 9/16-18 Jic Fitting mounted	
Distributor Tank line = 3/8" T valve port -3/4-16Jic Fitting mounted	
Power Pack Pressure line = 1/4" P port - 9/16-18 Jic Fitting mounted	
Power Pack Tank line = 1/4" T port - 9/16-18 Jic Fitting mounted	







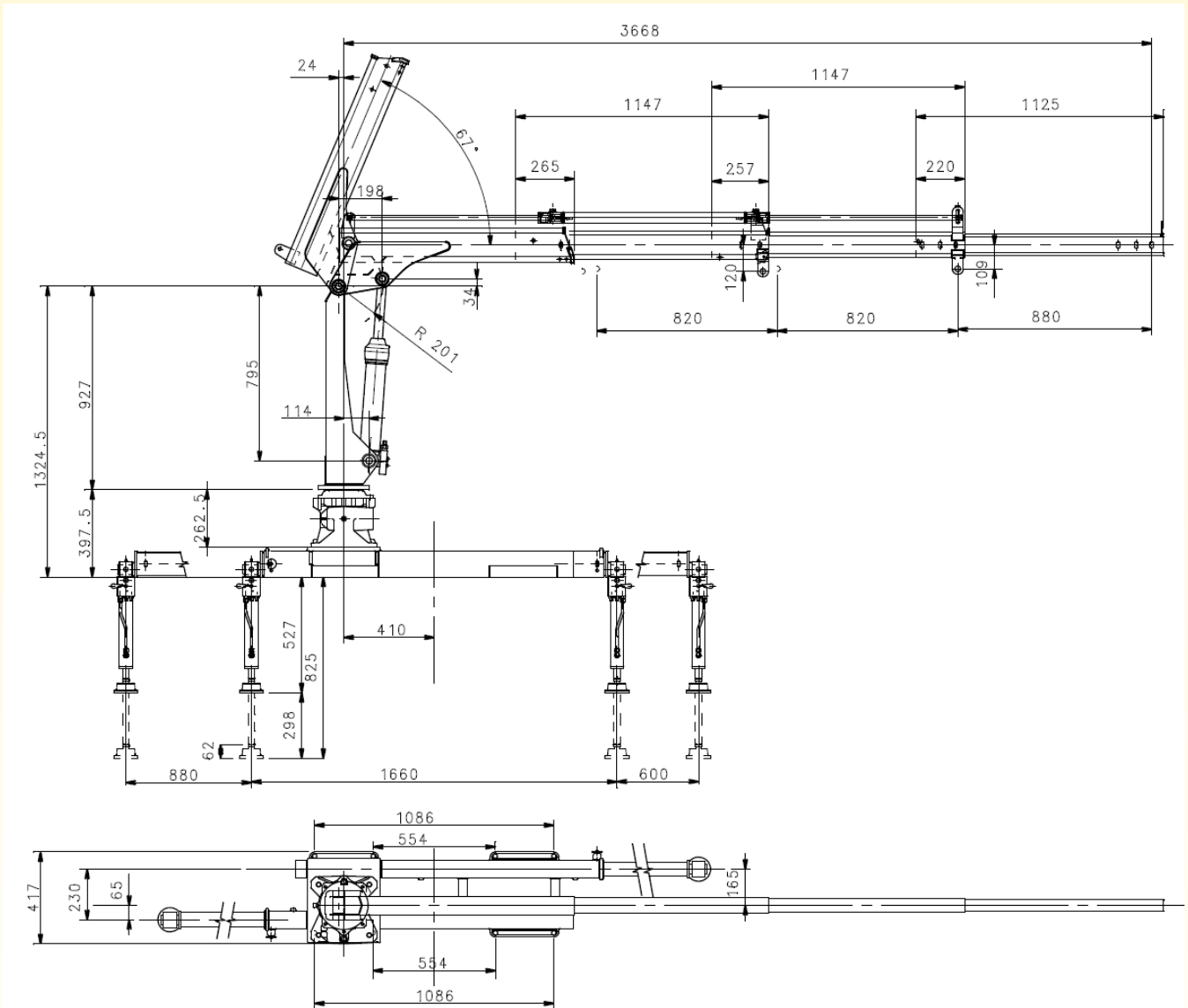
 OPTIONAL



 OPTIONAL

HA15 TECHNICAL SHEET

BASE-COLUMN - BOOM - DIMENSIONS



CYLINDERS AND PINS DIMENSIONS

LIFTING CYLINDER

<i>Cylinder bore</i>	80
<i>Cyl. ext. diameter</i>	90
<i>Rod diameter</i>	40
<i>Centers (open)</i>	995
<i>Centers (closed)</i>	610
<i>Stroke</i>	385
<i>Artic. pin Ø</i>	30
<i>Pin material</i>	C40 NORM

1ST - 2ND EXTENSION CYLINDER

<i>Cylinder bore</i>	40
<i>Cyl. ext. diameter</i>	50
<i>Rod diameter</i>	25
<i>Centers (open)</i>	1840
<i>Centers (closed)</i>	1020
<i>Stroke</i>	820
<i>Artic. pin Ø</i>	15
<i>Pin material</i>	39NiCrMo3 QT

TILTING STABILIZER CYLINDER

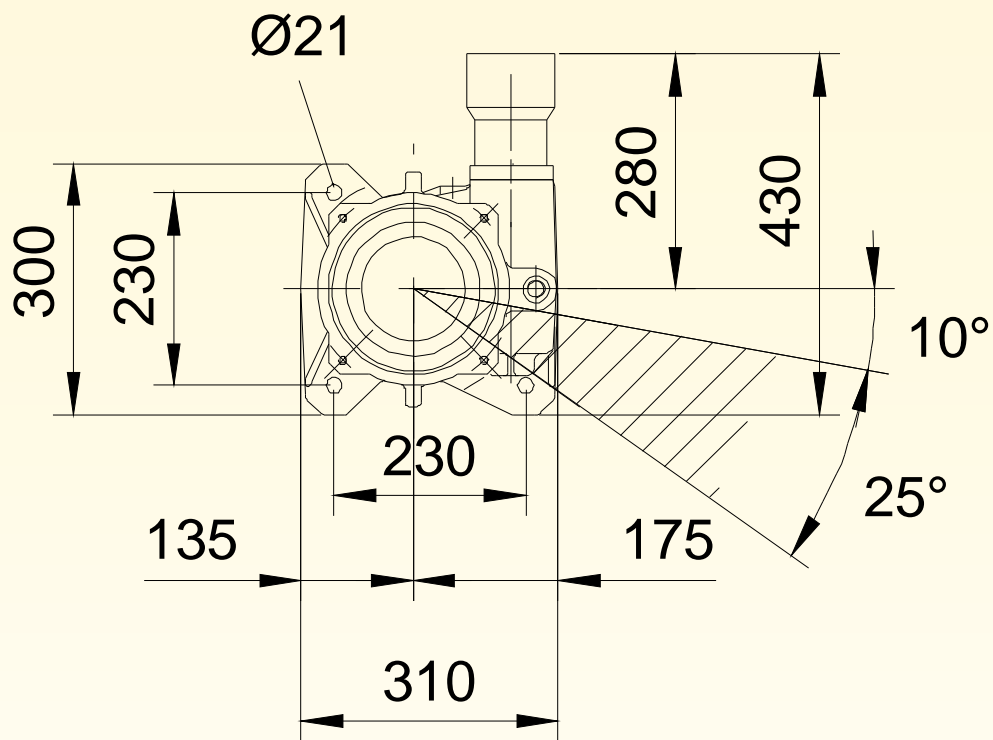
<i>Cylinder bore</i>	50
<i>Cyl. ext. diameter</i>	60
<i>Rod diameter</i>	30-
<i>Pitch (open)</i>	861
<i>Pitch (closed)</i>	562
<i>Stroke</i>	299
<i>Artic. pin Ø</i>	45
<i>Pin steel</i>	C40 NORM

FIXED STABILIZER CYLINDER

<i>Cylinder bore</i>	50
<i>Cyl. ext. diameter</i>	60
<i>Rod diameter</i>	30-
<i>Pitch (open)</i>	894
<i>Pitch (closed)</i>	566
<i>Stroke</i>	328
<i>Pin steel</i>	C40 NORM

HA15 TECHNICAL SHEET

BASE DIMENSIONS- TIE MOUNTING RODS

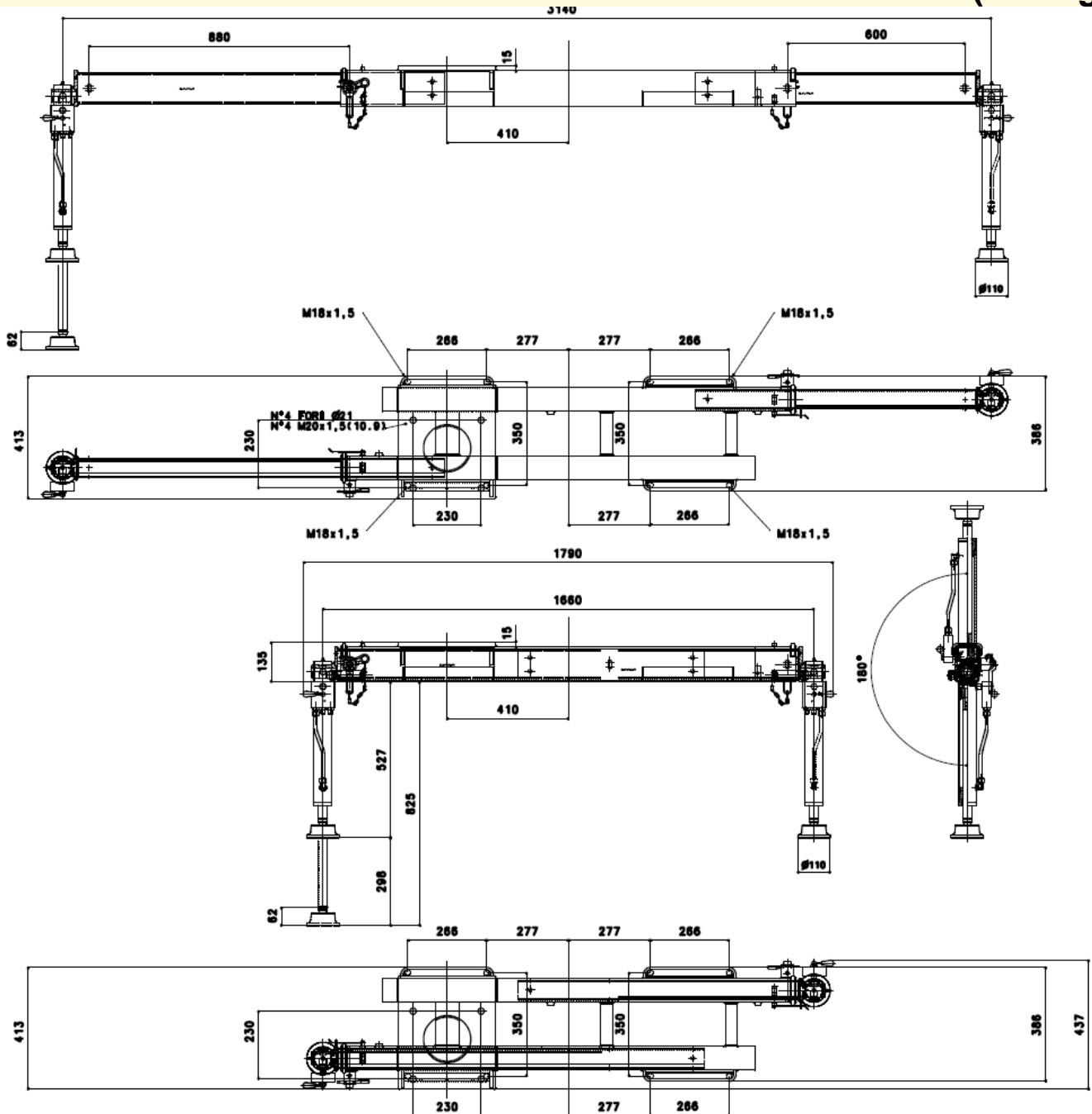


Fixing bolts	N ⁴ M20x1.5 L=70 10.9 UNI 5931	Tightening torque	240 Nm
---------------------	--	--------------------------	--------

HA15 TECHNICAL SHEET

OPTIONAL STABILIZER DIMENSIONS (A+E+E)

(115 Kg)

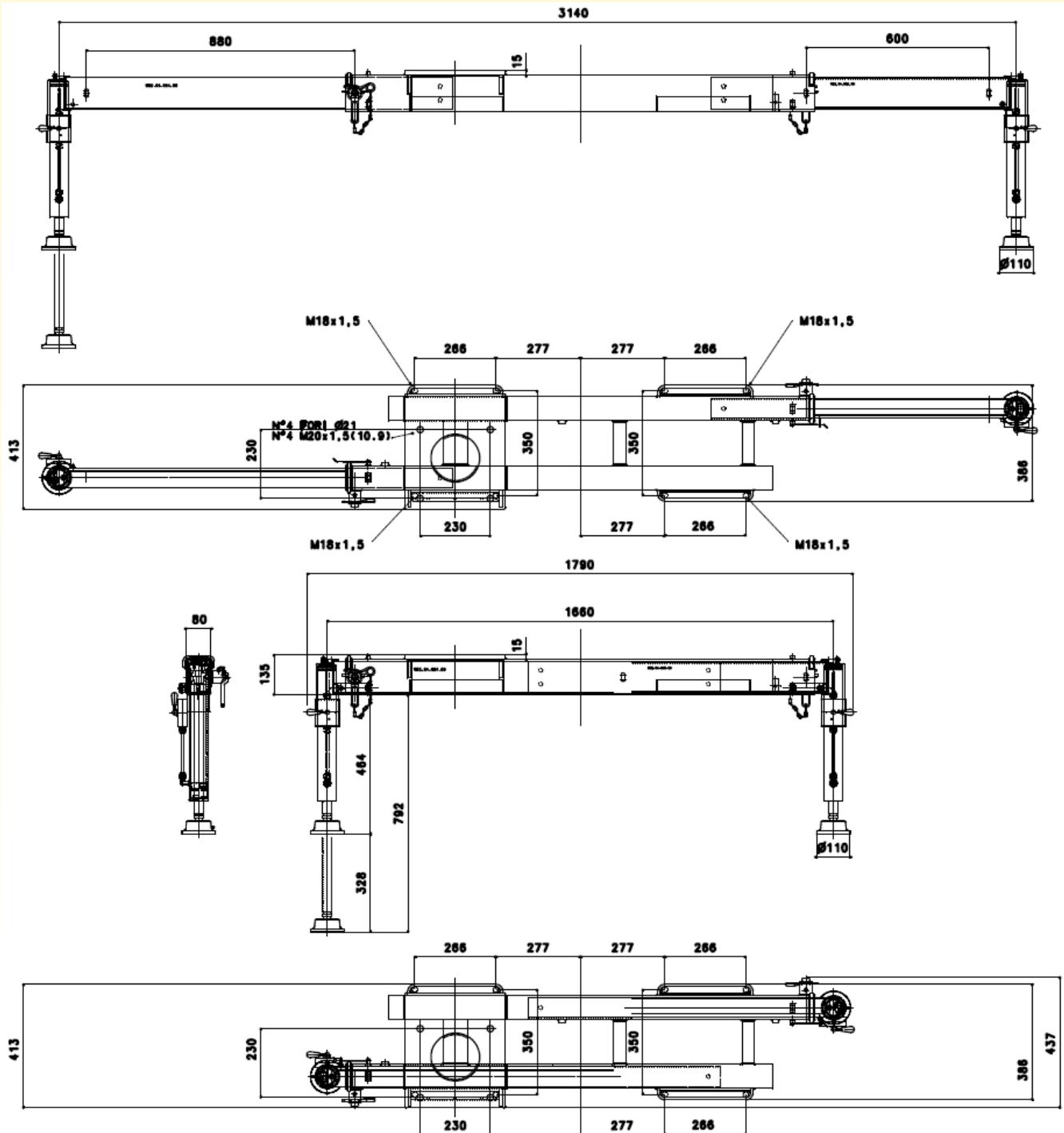


Fixing tie rods	N°8 M18x1.5 L=650 10.9	Tightening torque	150 Nm
Max force on the stabilizer leg	1207 daN		
Max standard stabilizer pressure on the Ground	12,7 daN/cm ²		

HA15 TECHNICAL SHEET

OPTIONAL EXTRA STABILIZER DIMENSIONS (A+D+D)

(115 Kg)

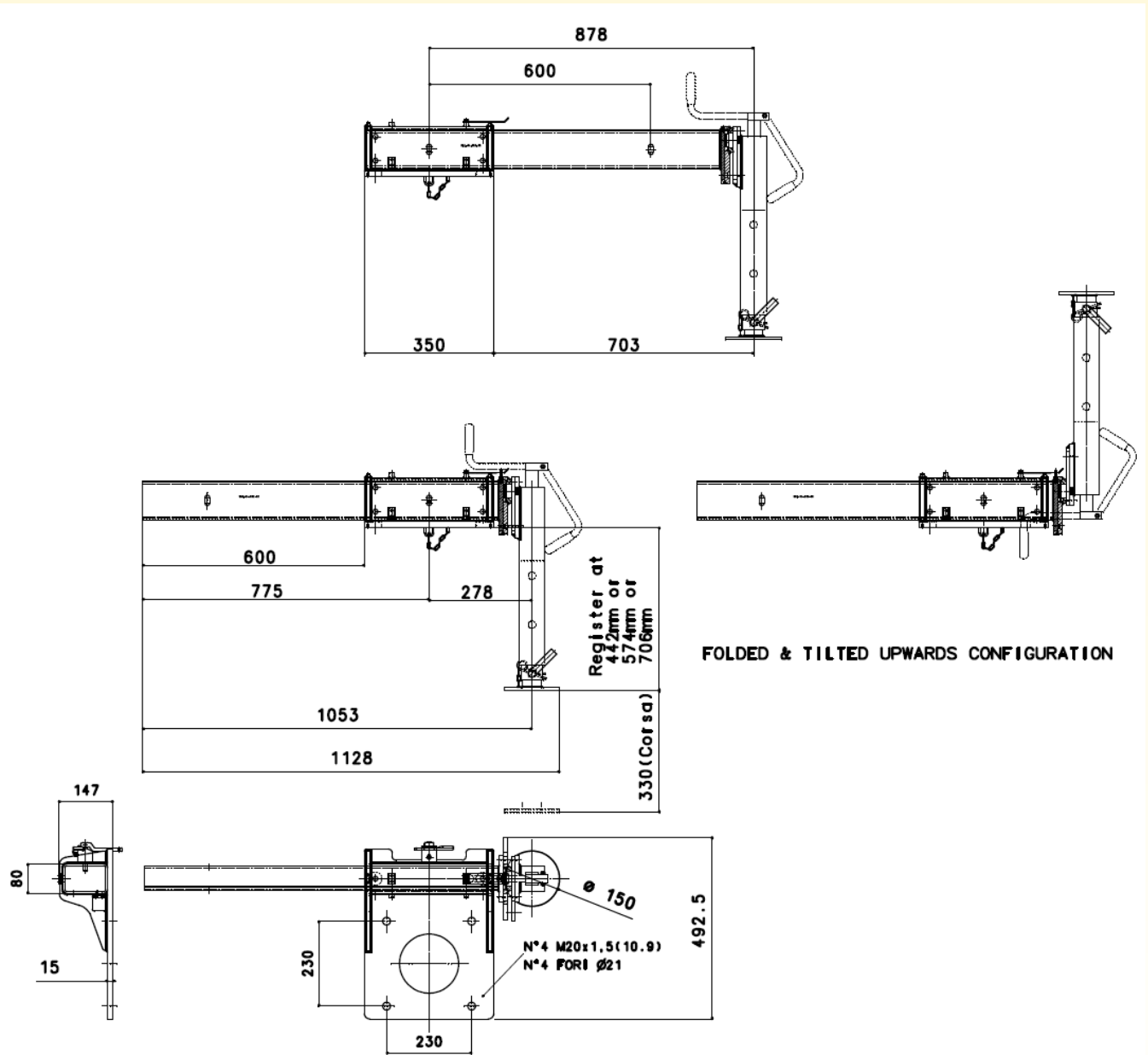


Fixing tie rods	N°8 M18x1.5 L=650 10.9	Tightening torque	150 Nm
Max force on the stabilizer extra			1207 daN
Max standard stabilizer pressure on the Ground (D=110)			12,7 daN/cm ²

HA15 TECHNICAL SHEET

OPTIONAL EXTRA STABILIZER DIMENSIONS (C)

(54 Kg)

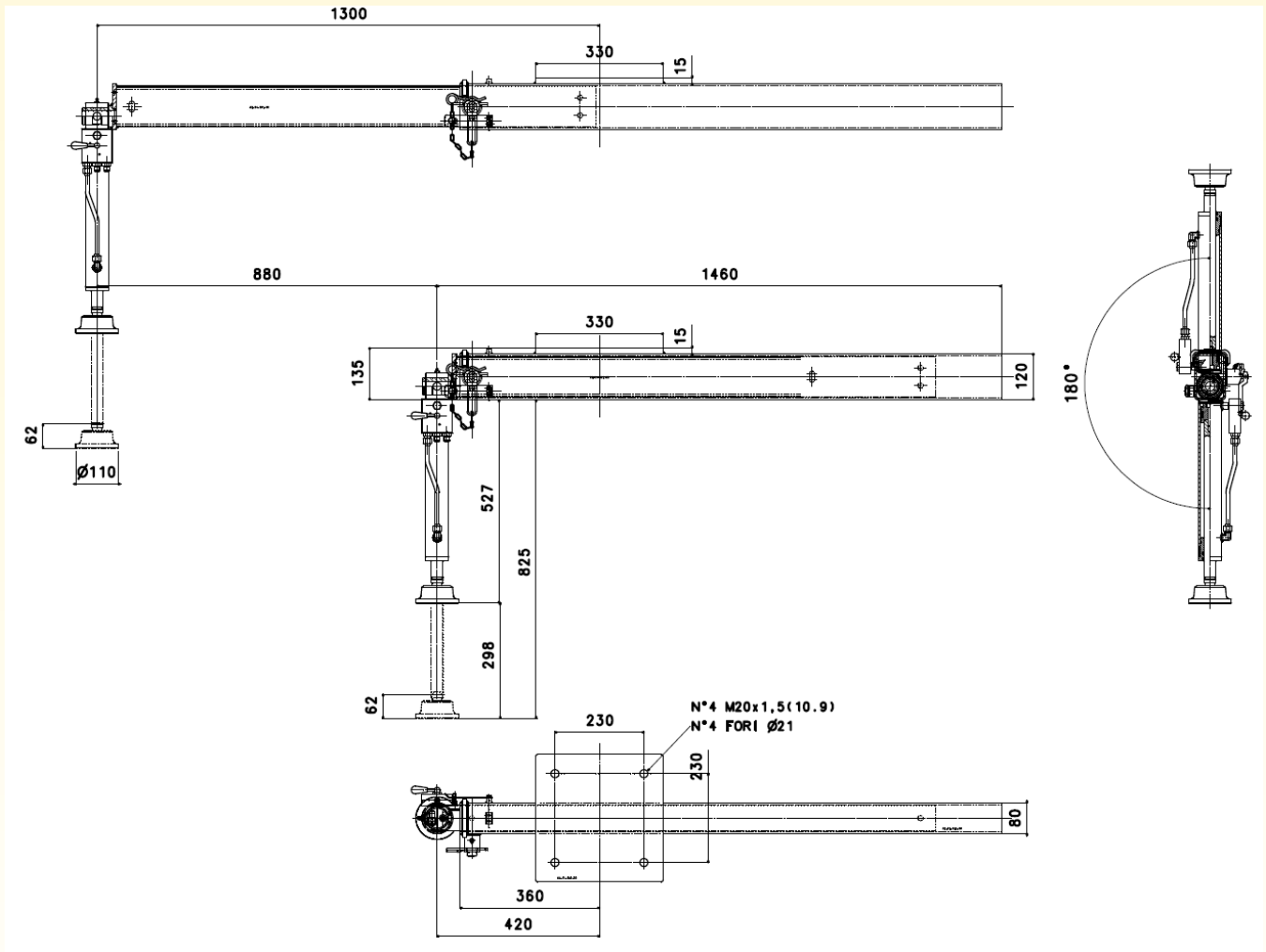


Max force on the stabilizer extra	1788 daN
Max standard stabilizer pressure on the Ground (D=150)	10,1 daN/cm ²

HA15 TECHNICAL SHEET

OPTIONAL EXTRA STABILIZER DIMENSIONS (B+E)

(62 Kg)

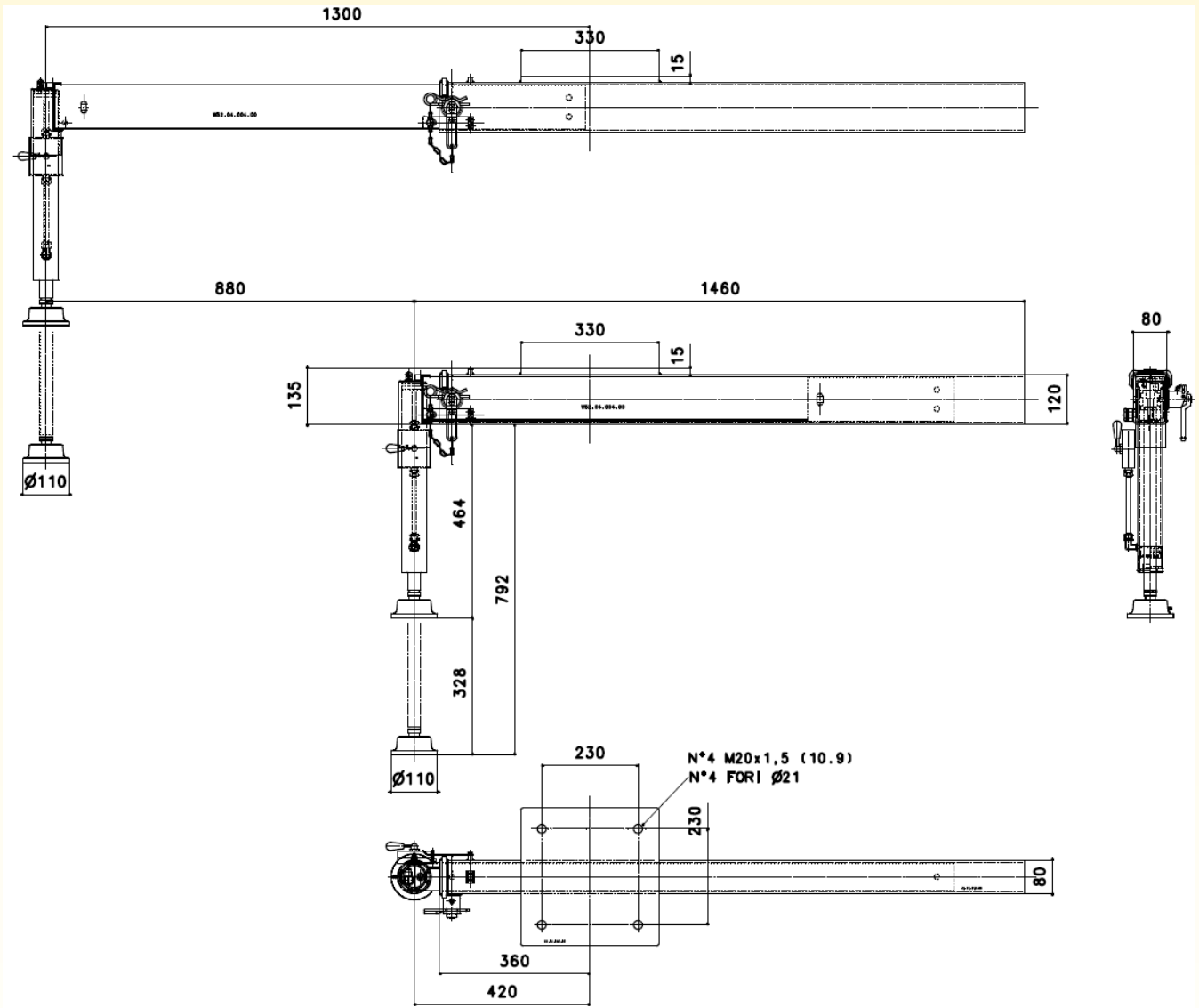


Max force on the stabilizer	1207 daN
Max standard stabilizer pressure on the Ground (D=110)	12,7 daN/cm ²

HA15 TECHNICAL SHEET

OPTIONAL EXTRA STABILIZER DIMENSIONS (B+D)

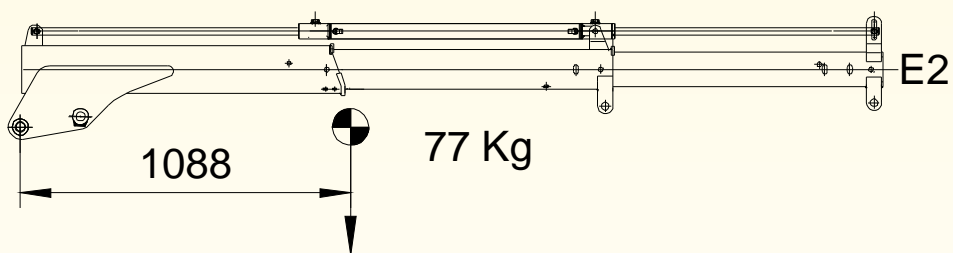
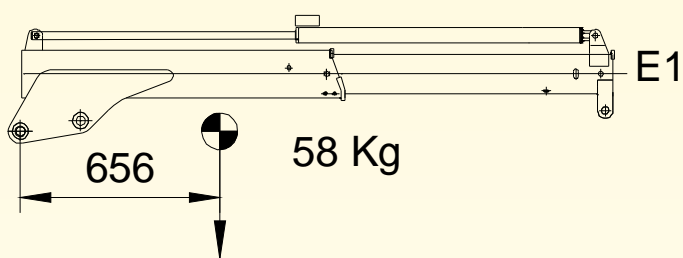
(61 Kg)



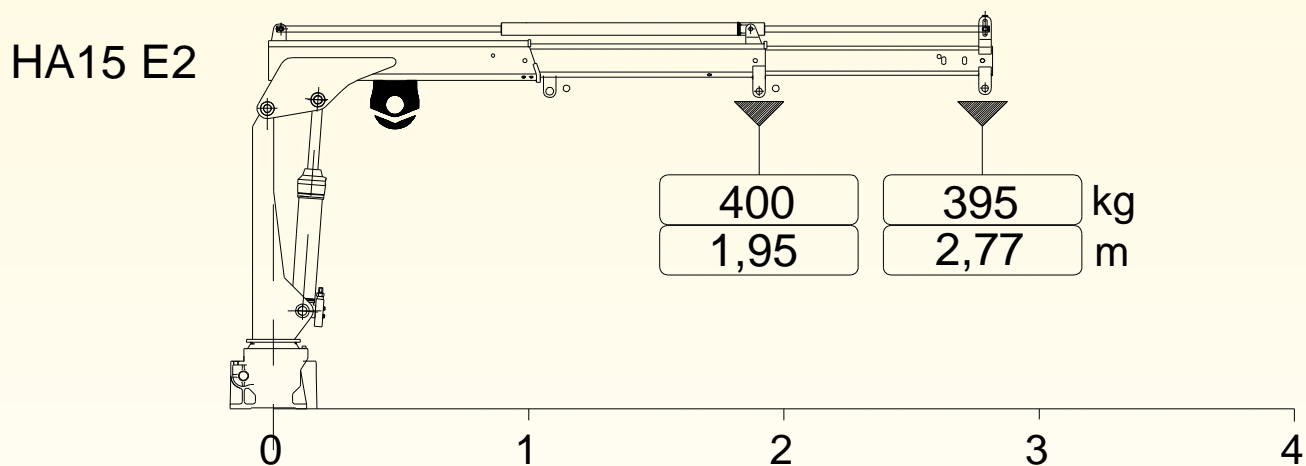
Max force on the stabilizer	1207 daN
Max standard stabilizer pressure on the Ground (D=110)	12,7 daN/cm ²

HA15 TECHNICAL SHEET

WEIGHTS – CENTERS OF GRAVITY



	NO STAB.	BPS	BST
Fixed parts weight [kg]	116	176	224



CRANE E2

Max winch direct pull [kg]	400
----------------------------	-----