

# Self-Propelled Telescopic Booms

## SX-125 XC™

### Specifications

Models	SX-125 XC	
Measurements	Metric	US
Working height maximum*	40.10 m	131 ft
Platform height maximum	38.10 m	125 ft
Horizontal reach maximum	24.38 m	80 ft
Below ground reach	2.69 m	8 ft 10 in
▲ Platform length - 8 ft model	0.91 m	3 ft
Platform length - 6 ft model	0.76 m	2 ft 6 in
▲ Platform width - 8 ft model	2.44 m	8 ft
Platform width - 6 ft model	1.83 m	6 ft
▲ Height - stowed	3.05 m	10 ft
▲ Length - stowed	14.25 m	46 ft 9 in
Length - transport (jib tucked under)	12.19 m	40 ft
▲ Width - axles retracted	2.49 m	8 ft 2 in
Width - axles extended	3.94 m	12 ft 11 in
▲ Wheelbase	4.11 m	13 ft 6 in
▲ Ground clearance - center	38.1 cm	15 in

### Productivity

Maximum lift capacity - unrestricted	300 kg	660 lb
- restricted	454 kg	1,000 lb
Platform rotation	160°	
Vertical jib rotation - up/down	135°	
Turntable rotation	360° continuous	
Turntable tailswing - axle retracted	0.56 m	1 ft 10 in
Turntable tailswing - axle extended	1.02 m	3 ft 4 in
Drive speed - stowed	4.9 km/h	3.0 mph
- raised (below 125 ft)	0.6 km/h	0.38 mph
Gradeability - stowed**	40%	
Turning radius - axle retracted: inside	8.03 m	26 ft 4 in
outside	9.96 m	32 ft 8 in
Turning radius - axle extended: inside	2.90 m	9 ft 6 in
outside	6.17 m	20 ft 3 in
Controls	12 V DC proportional	
Tyres - RT foam filled	445D50/710HD	

### Power

Power source	Deutz TD 2011 L04i, 74 hp (55 kW), Stage IIIA, air-cooled Deutz TD2.9 L4, 74 hp (55 kW), Stage IIIB, water-cooled	
Auxiliary power unit	12 V DC	
Hydraulic tank capacity	208 L	55 gal
Fuel tank capacity	151 L	40 gal

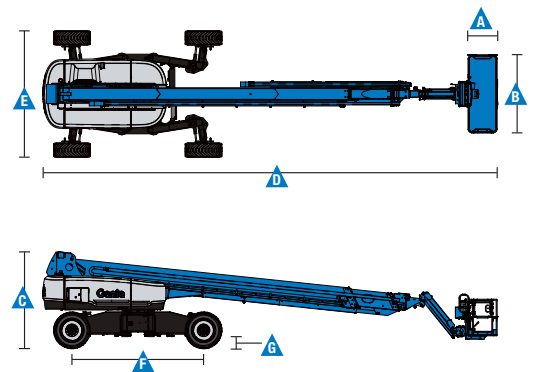
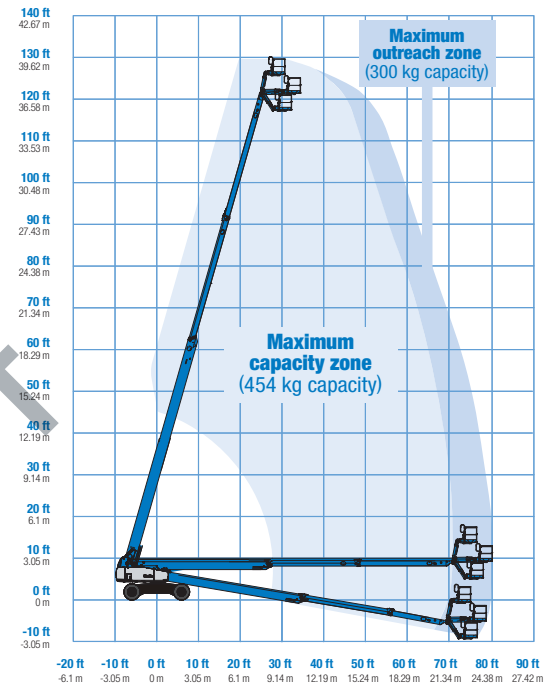
### Weight\*\*\*

4WD	20,700 kg	45,636 lbs
-----	-----------	------------

### Standards Compliance

EU Directives: 2006/42/EC - Machinery  
(harmonized standard EN280); 2004/108/EC (EMC);  
2000/14/EC (Outdoor Noise)

### Range Of Motion SX-125 XC



\* The metric equivalent of working height adds 2 m to platform height.  
U.S. adds 6 ft to platform height.

\*\* Gradeability applies to driving on slopes. See operator's manual for details regarding slope ratings.

\*\*\* Weight will vary depending on options and/or country standards.

# Self-Propelled Telescopic Booms

## SX-125 XC™

## Features

### Standard Features

#### Measurements

- 40.10 m (131 ft) working height
- 27.43 m (80 ft) horizontal reach
- 300 kg (660 lb) unrestricted and 454 kg (1,000 lb) restricted lift capacity

#### Productivity

- 1.52 m (5 ft) jib boom
- Self-leveling platform
- 160° hydraulic platform rotation
- Thumb rocker steering
- Two work lights on chassis and platform
- Proportional joystick controls
- Hydraulic oil cooler
- Drive enable system
- Chassis tilt drive function cut-out
- AC power cord to platform
- Horn
- Hour meter
- Tilt alarm
- Descent motion & travel alarms
- Flashing beacon
- 360° continuous turntable rotation
- Platform & ground control box covers
- Positive traction drive
- Two speed wheel motors
- Four wheel high angle steer
- Four steering modes: front, rear, crab and coordinated
- On board full diagnostics and engine monitoring display
- Telematics ready connector
- Lift Guard™ Contact Alarm

#### Power

- All engines are emissions compliant
- 12 V DC auxiliary power
- Anti-restart engine protection
- Auto engine fault shutdown
- Intake air heater

- Engine gauge display

#### Drive/Steer

- 4 x 4 (standard)
- 4 wheel steer (standard)

#### Axles

- Mini XChassis™ extendable axles

#### Tyres

- Rough terrain foam-filled (standard)

### Options & Accessories

#### Productivity Options

- Half-mesh platform inserts
- Platform auxiliary top rail
- Power to platform: plug, socket, with optional Residual-current Circuit Breaker with Overcurrent protection <sup>(1)</sup>
- Dual axis joystick steering
- Biodegradable hydraulic oil
- Hostile environment kit <sup>(2)</sup>
- Panel cradle package
- Track & Trace <sup>(1)</sup> (GPS unit providing machine location & operating information)
- Operator Protective Structure <sup>(3)</sup>

#### Power Options

- AC Generator Packages (110V/60 Hz, 110V/50Hz, 240V/50 Hz), 3000 W, hydraulically driven
- Diesel catalytic scrubber muffler <sup>(2)</sup>
- Diesel air intake pre-cleaner <sup>(2)</sup>



<sup>(1)</sup> Includes a first 2 years subscription  
<sup>(2)</sup> Factory-fit option only  
<sup>(3)</sup> Aftermarket only

Genie – Toll free number 1800 788 633

**Brisbane**  
HEAD OFFICE

33 Kimberley Street  
Darra QLD 4076

**Sydney**

74 Glendenning Road  
Glendenning NSW 2761

**Melbourne**

133 Logis Boulevard  
Dandenong Sth VIC 3175

**Adelaide**

16-18 Nixon Road  
Wingfield SA 5013

**Perth**

126 Sheffield Road  
Welshpool WA 6106

**Darwin**

33 McCourt Road  
Yarrowonga NT 0830

Genie USA

18340 NE 76th Street  
P.O. Box 97030  
Redmond, Washington  
98073-9730

Distributed By:

Effective Date: May, 2018. Product specifications and prices are subject to change without notice or obligation. The photographs and/or drawings in this document are for illustrative purposes only. Refer to the appropriate Operator's Manual for instructions on the proper use of this equipment. Failure to follow the appropriate Operator's Manual when using our equipment or to otherwise act irresponsibly may result in serious injury or death. The only warranty applicable to our equipment is the standard written warranty applicable to the particular product and sale and we make no other warranty, express or implied. Products and services listed may be trademarks, service marks or trade names of Terex Corporation and/or their subsidiaries in the USA and many other countries. Genie is a registered trademark of Terex South Dakota, Inc. © 2018 Terex Corporation.