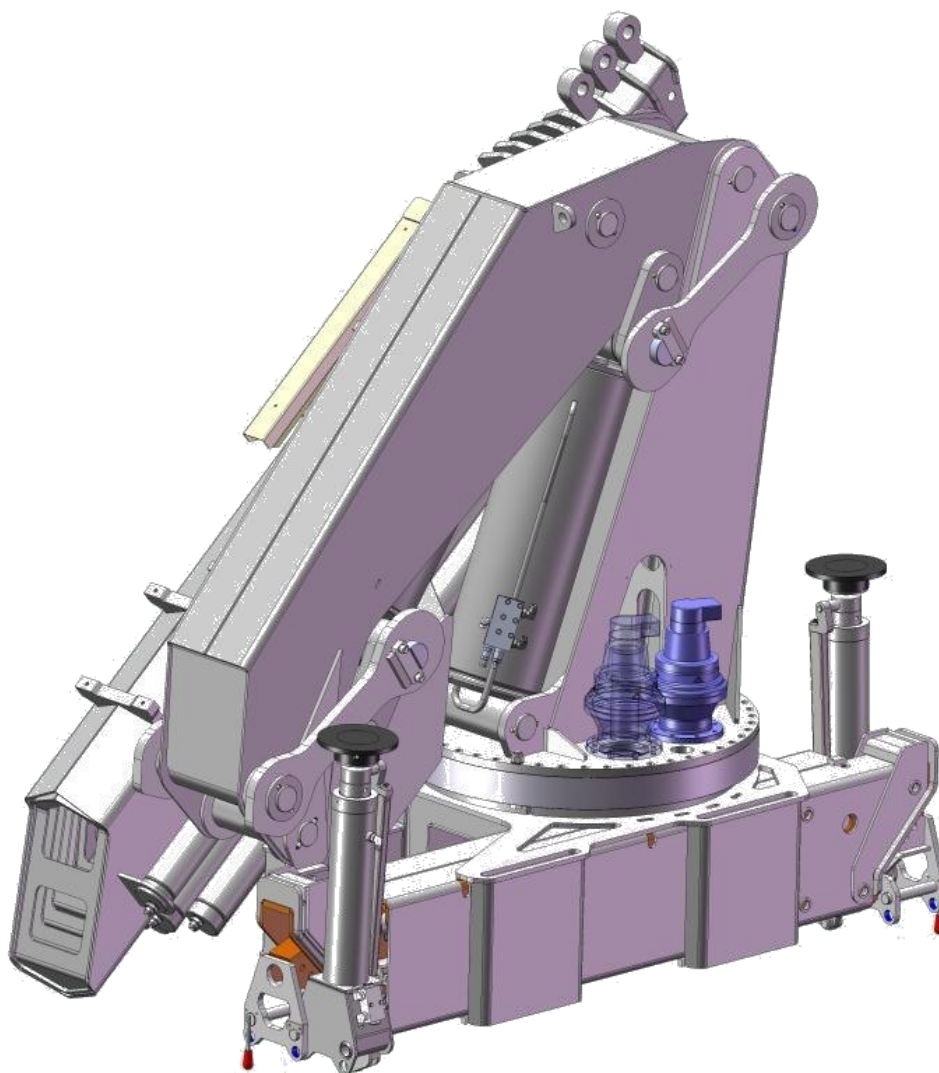


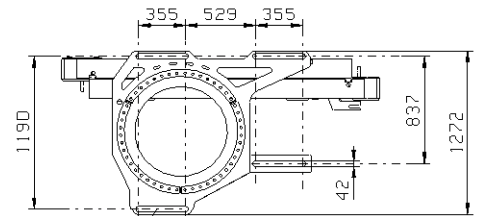
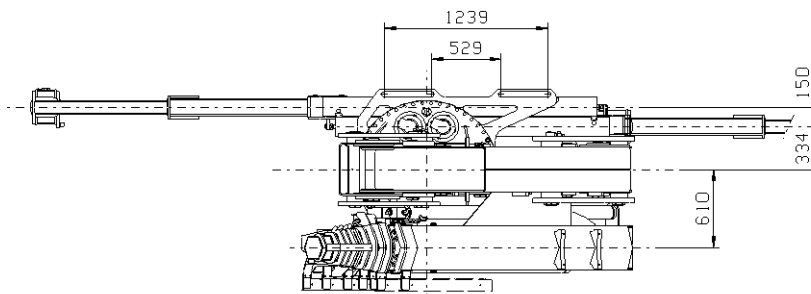
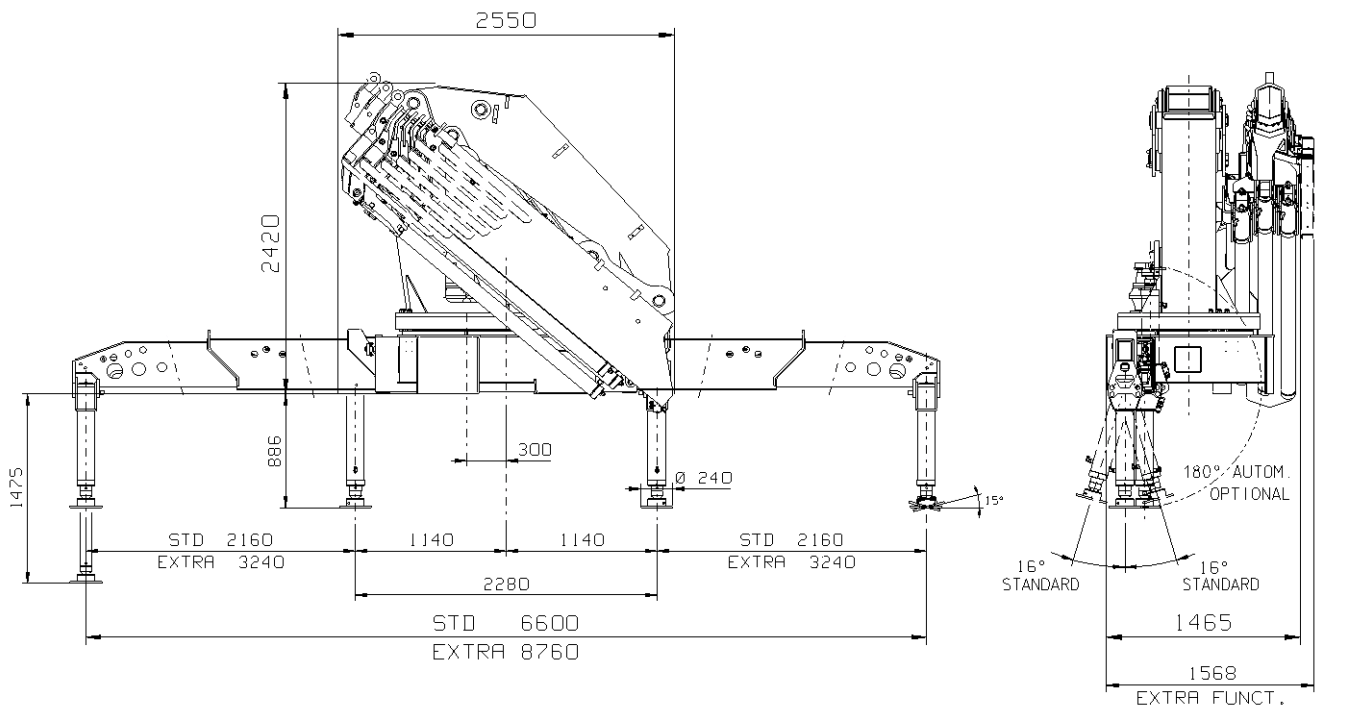
TRUCK MOUNTED CRANE HBR600



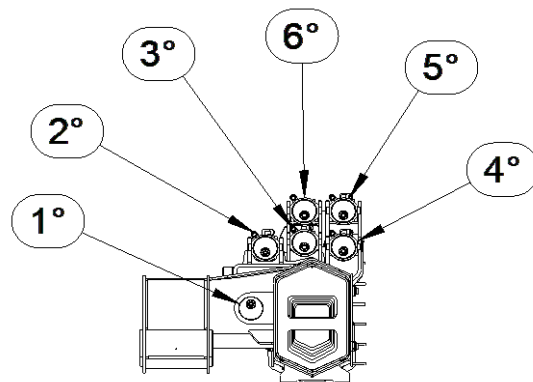
HYVA[®] CRANE

HBR600 TECHNICAL SHEET

OVERALL DIMENSION



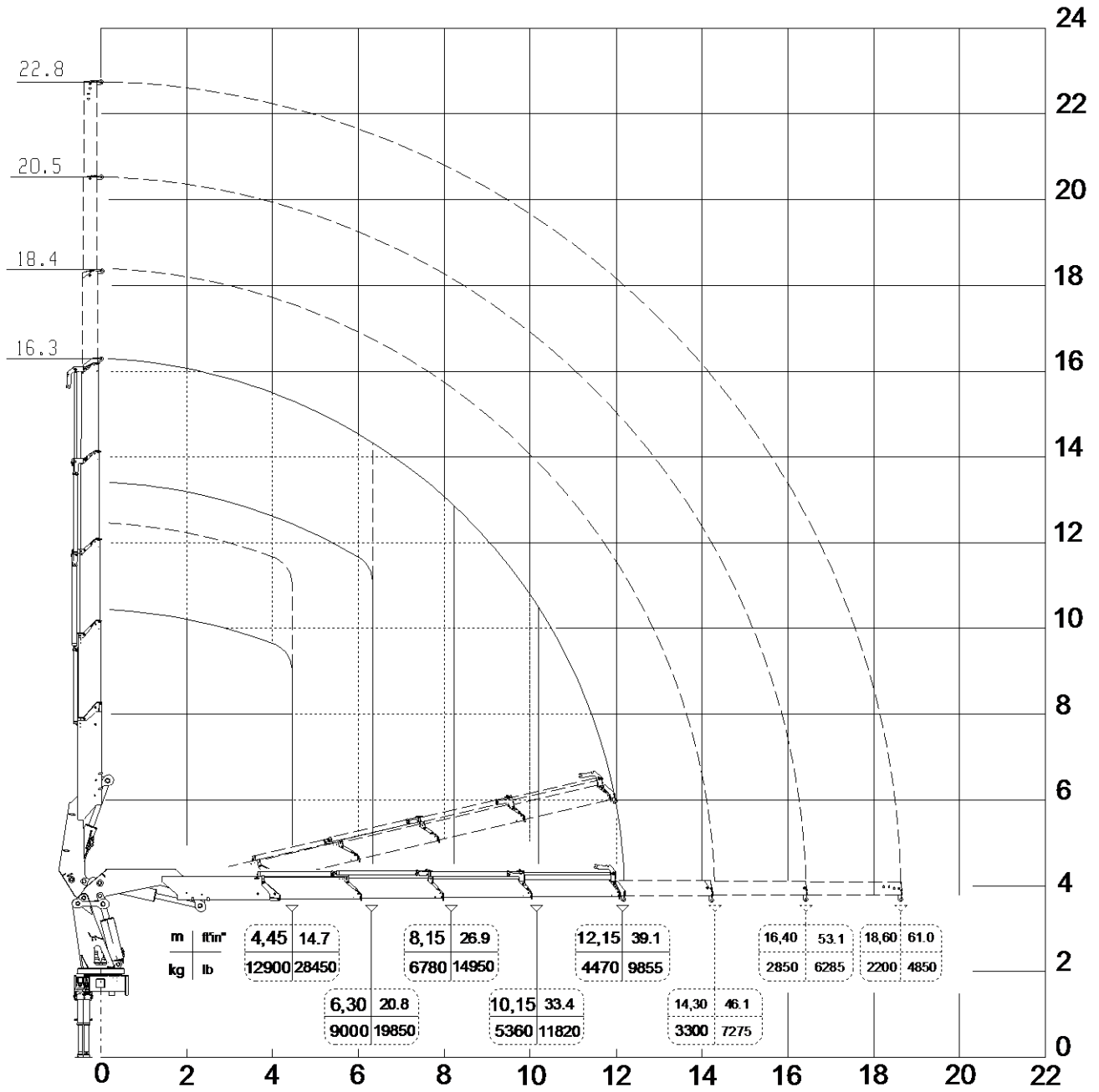
N°8 TIRANTI M39x3
MAT.: 39NiCrMo3 bnf.



HBR600 TECHNICAL SHEET

LOAD DIAGRAM

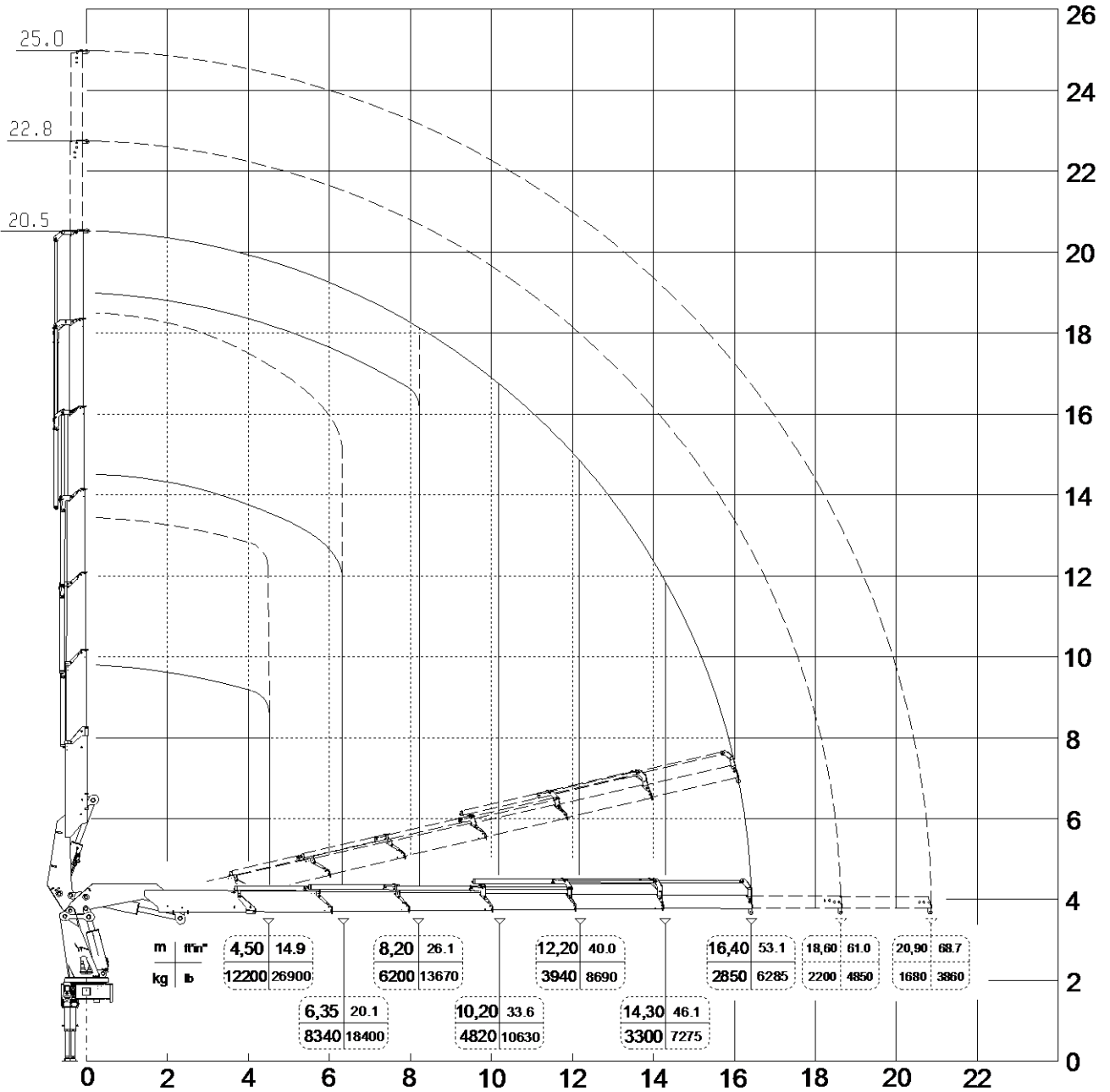
HBR600 E4



HBR600 TECHNICAL SHEET

LOAD DIAGRAM

HBR600 E6



HBR600 TECHNICAL SHEET

TECHNICAL DATA

		Unit of measurement	Unit of measurement
		SI	USA
MAX LIFTING MOMENT		<i>tm</i> 58	<i>lb ft</i> 419510
MAX HYDRAULIC HORIZONTAL REACH	Version	<i>m</i>	<i>ft</i>
	E4	12,15	39' 1"
	E6	16,40	53' 1"
MAX HYDRAULIC VERTICAL REACH	Version	<i>m</i>	<i>ft</i>
	E4	16,30	53' 6"
	E6	20,50	67' 3"
SLEWING ANGLE		420°	
SLEWING SPEED		360° - 40 s	
SLEWING TORQUE STD.		<i>daNm</i> 4500	<i>lb ft</i> 33190
MAX WORKING HEEL		4° (7%)	
WORKING PRESSURE		<i>bar</i> 290	<i>psi</i> 4200
MAX OIL FLOW TO MAIN VALVE		<i>dm³/min</i> 70	<i>Gal/min</i> 18,5
OIL TANK CAPACITY		<i>dm³</i> 250	<i>Gal</i> 66
BASE CRANE WEIGHT	Version	<i>kg</i>	<i>lb</i>
	E4	5100	11240
	E6	5600	12350
WEIGHT OF STD STABILIZER	6600	900	1980
WEIGHT OF EXTRA WIDE STABILIZER	8760	1100	2430

TECHNICAL DATA

- Hexagonal extensions
- Independent extension cylinders
- Outriggers with hydraulic extension
- Sandblasting of principal components
- Design in accordance with: EN12999

OPTIONS

- 3 ton winch
- One or two supplementary element activations
- Manual extensions
- 2nd gear motor
- Remote control unit
- Extra wide stabilizers
- Extra wide stabilizers with automatic turning
- Regenerative valve electrically excludable
- Mechanical limiting device of the slewing
- Audible-visual signal tower 90%-100%
- Emergency stop button
- Crane mounting bolts M39x3

PLUS

- Wider rotation angle
- Reduced installation space required between truck cabin and body
- Folded crane Center of Gravity in line with vehicle center line
- No installation space required under the base
- Horizontal controls
- Cross controls
- Longer first boom
- Negative angle boom +15°
- Load limiting device