



CARGO FLOOR®

HORIZONTAL LOADING-/UNLOADING SYSTEM

Only Quality generates Quality!™

Subject : **Steel floor profile**
Type : **L-shape floor profile**



Transport
of abrasive materials
without compromise



4/122 mm steel L-shape floor profile

Is weight not the most important issue?

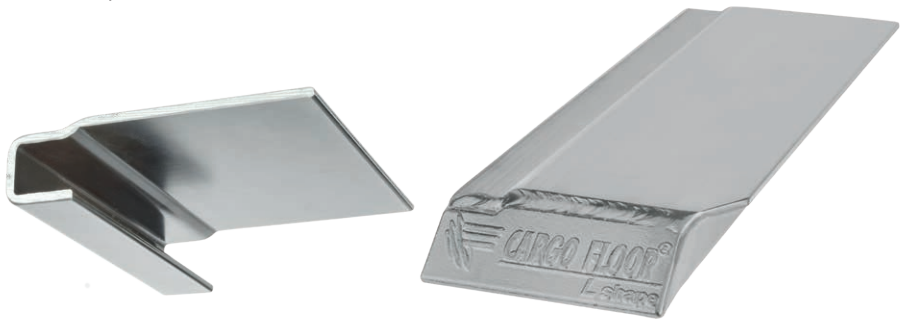
But the degree to which the moving floor profiles are hard-wearing is? We then recommend choosing the super strong and hard-wearing L-shape floor profile. The shape and choice of material makes the Cargo Floor L-shape the perfect solution for the transport of abrasive material. The impact resistance is also relatively high because of the shape and the strength of the profile.







Magnelis® preservation

This is a unique steel preservation made out of zinc, magnesium and aluminium. This preservation is unique because small damages are self-healing. Because of this, this preservation is viewed as one of the best for steel.

Highlights

- ✓ Pressure seal because of the overlap (no plastic seal)
- ✓ Can be easily cleaned (no residue)
- ✓ High wear resistance
- ✓ Impact resistance
- ✓ Can be driven on with a loaded forklift truck
- ✓ High temperature resistance
- ✓ Easy to install



Multi-Functionality	leak proof	clean ability	pallet-/bales transport	drive over with a fork lift truck	impact resistance
					

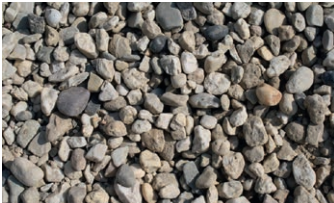
The 4/112 mm steel L-shape profile is suitable for the transport of:



Sand



Rubble



Gravel



Recycled asphalt



Stones



Glass



Steel scrap metal



Aluminium waste

Bearing

The steel L-shape profiles run over solid plastic bearings and can be mounted in trailers with square tubes or directly on the cross members. In other words: these floor profiles fit all trailer constructions that are suitable for the standard Cargo Floor system in the 21 floor profile execution



Efficiency/output

Efficiency of loading and unloading (packed) cargo is determined mainly by the flatness and the even weight distribution of the cargo over the floor area of the Cargo Floor. Uneven weight distribution will reduce efficiency and may even cause the cargo to only move back and forth within the power stroke of the system. Uneven cargo weight distribution can be compensated by using supports to spread the weight evenly across the floor profiles. The systems operating speed can also affect loading and unloading efficiency.

Driving over the floor with a fork-lift truck

In principle all Cargo Floor floors can be driven over by a fork-lift truck; contact your body builder for information about the permitted weights!

Important note

If you are considering using the L-shape steel floor profiles, first ask for the general guide and warnings for applying these profiles.

MOVING FLOOR

The Lightest ..
The Strongest ..
Simply The Best!



CARGO FLOOR®

HORIZONTAL LOADING-/UNLOADINGSYSTEM

Cargo Floor B.V.
Byte 14
7741 MK COEVORDEN
The Netherlands
☎ +31 524 593 900
✉ info@cargofloor.com
www.cargofloor.com



**WORLDWIDE
SERVICE NETWORK**

The information in this brochure is for information purposes only, no rights can be derived from the content thereof. Copyright July 2019.